



UNIVERSITÀ
DI SIENA
1240

**QUADERNI DEL DIPARTIMENTO
DI ECONOMIA POLITICA E STATISTICA**

**Marwil J. Dávila-Fernández
Serena Sordi**

Distributive cycles and endogenous technical
change in a BoPC growth model

n. 760 – Ottobre 2017



Distributive cycles and endogenous technical change in a BoPC growth model

Marwil J. Dávila-Fernández*

Serena Sordi

Department of Economics and Statistics
University of Siena

October 2017

Abstract

Our purpose in this paper is to expand Goodwin's (1967) distributive cycle model to an open economy framework in a way that incorporates the balance-of-payments constraint on growth. We do so by allowing technical change to be endogenous to the cyclical dynamics of the system and by adopting an independent investment function. We show that a Hopf-Bifurcation analysis establishes the possibility of persistent and bounded cyclical paths both for a 3D and a 4D extension of the model. Some numerical simulations are performed based on the analytical models developed. Motivational empirical evidence is also provided for Thirlwall's law and the respective adjustment mechanism using a sample of 17 OECD countries.

Keywords: Growth cycle; Goodwin; Thirlwall's law; Kaldor-Verdoorn; Distributive cycles; Hopf bifurcation.

JEL: E12; E32; O40

*Corresponding author: marwil_davila@hotmail.com

1 Introduction

Goodwin's (1967) distributive cycle model has reached its fiftieth anniversary. In spite of its vintage, the model continues to be a fruitful and powerful "system for doing macro-dynamics". In the last fifty years, more than one hundred contributions have tried to generalise its formulation in all possible directions and the mathematical structure of the model has been used as a basic framework to study different dimensions of capitalism's structural instability. It must be noted, however, that with the exception of the high-dimensional Keynes-Metzler-Goodwin (KGM) system put forward by Asada, Chiarella, Flaschel and Franke (e.g. Asada et al, 2003), most existing efforts have been based on a closed economy set up. Needless to say, in the real world, economies are open to international trade and there are complications in applying analytical results based on the assumption of a closed economy.

When studying distributive dynamics in open economies, a particularly important problem arises that has not been discussed in the KGM literature and that we consider to deserve a careful analysis. The reason for this is that one of the most influential empirical regularities in the Kaldorian growth literature – namely, Thirlwall's rule (or law) – states that, in the long-run, growth is subject to the balance-of-payments constraint (BoPC). Given that countries cannot systematically finance increasing balance-of-payments imbalances it implies that there is an adjustment in aggregate demand that constrains growth (Thirlwall, 1979, 2011).

Our purpose is to investigate such adjustment mechanism and its distributive implications over the cycle. In order to do so, we expand the original growth cycle set up to an open economy framework in a way that incorporates the external constraint. Furthermore, it is our aim to do this by allowing technical change to be endogenous to the cyclical dynamics of the system.

The importance of our contribution lies in providing a base-line model to study distributive dynamics in open economies. In this sense, our exercise has some similarities with the pioneering work of Blecker (1989) and more recently Sasaki et al (2013), among others. Still, these contributions start from a Kaleckian framework which is different from the perspective adopted here. We consider our approach preferable for at least three reasons. First, cycles are rooted in the functioning of labour markets. This contrasts with traditional Kaleckian models that give marginal attention to the labour market. Second, even though the growth cycle set up does not explicitly differentiate between long and short run, its dynamics recall Kalecki statement "the long run trend is but a slowly changing component of a chain of short run situations; it has no independent entity" (Kalecki, 1968, p. 5) – a statement frequently ignored in latter formalizations of the Polish economist. Finally, we do not rely in the controversial Keynesian stability condition.

Introducing demand constraints means that any assumption of a constant or full rate of capacity utilisation cannot hold anymore. Hence, the basic motion of the system includes, besides the employment rate and the wage-share, also the rate of capacity utilisation. We show that without having to impose any special condition on the values of the parameters, a Hopf-Bifurcation analysis establishes the possibility of persistent and bounded cyclical paths for the resulting 3-dimensional non-linear dynamic system providing insights to enable better understanding of the nature of real-world fluctuations.

While the hypothesis of equilibrium in the balance-of-payments is plausible for the long-run, in the short-term growth might deviate from the external constraint. Therefore, we also allow for such deviations by developing a 4-dimensional dynamic system that is fully embedded in Goodwin's fundamental insight that trend and cycle are indissolubly fused. In this second case, disequilibrium in the goods market is further explored introducing an independent investment

function. Some numerical simulations are performed based on the analytical models.

The paper is organised as follows. In the next section we briefly review the original formulation of Goodwin's distributive cycle model. Section 3 presents our first extension of the model in which we no longer have full capacity utilisation and the rate of growth of output always follows the BoPC. In section 4 we allow growth to deviate from the external constraint and, therefore, we are also able to introduce an independent investment function. Some final considerations follow.

2 The original formulation

In his growth cycle paper, Goodwin (1967) aimed at building a model capable of generating cycles in the growth rate of output rooted in the functioning of the labour market and the dynamics of distributive conflict. To concentrate on this point, he assumed full capacity utilisation so that the Keynesian principle of effective demand plays no role. The model was originally conceived for a closed economy without government. For expositional purposes we can divide it into two blocks of equations: (i) supply conditions, and (ii) distributive conditions.

2.1 Supply conditions

Consider the following production function:

$$Y = \min\{Ku; qNe\}$$

where Y is output, K stands for capital, u in the absence of better nomenclature stands for effective capacity utilisation, q is labour productivity, N is total labour force, and e is the employment rate. Effective capacity utilisation is given by $(Y/Y^*)(Y^*/K)$ with Y^* as production at full capacity. That is, effective capacity utilization equals actual capacity utilization multiplied by capital productivity when all machines and equipment are employed. This is the same as saying that u is given by actual capital productivity, Y/K , or the inverse of the actual capital-output ratio, $(K/Y)^{-1}$. Notice that in Goodwin (1967), Y/Y^* was supposed to be equal to one so that effective and actual capacity are the same and u becomes simply the inverse of the capital-output ratio. Moreover, the employment rate is given by L/N , where L is the level of employment.

The Leontieff dynamic efficiency condition states that:¹

$$\frac{\dot{Y}}{Y} = \frac{\dot{K}}{K} + \frac{\dot{u}}{u} = \frac{\dot{q}}{q} + \frac{\dot{N}}{N} + \frac{\dot{e}}{e} \quad (1)$$

For a constant effective capacity utilisation, such that $\frac{\dot{u}}{u} = 0$, and an exogenous labour force growth rate, equal to n , from (1) it follows that the rate of growth of output equals the rate of capital accumulation:

$$\frac{\dot{Y}}{Y} = \frac{\dot{K}}{K} \quad (2)$$

¹For any variable x , \dot{x} indicates its time derivative (dx/dt), while \hat{x} indicates its growth rate (\dot{x}/x). Notice that the Leontieff production function is in a sense an accounting identity because $Y = K \left(\frac{Y}{K}\right) \left(\frac{Y^*}{Y}\right) = \left(\frac{Y}{L}\right) N \left(\frac{L}{N}\right)$.

and

$$\frac{\dot{e}}{e} = \frac{\dot{Y}}{Y} - \frac{\dot{q}}{q} - n \quad (3)$$

i.e., variations in the employment rate are set by the difference between the economy's growth rate and the sum of labour productivity and labour force growth rates. This is equivalent to saying that the employment rate adjusts to the difference between actual and (Harrod's) natural rate of growth.

2.2 Distributive conditions

In an economy with two factors of production and no government, the income identity is:

$$Y = wL + rK$$

where w and r are respectively real wages and the rate of return on capital.

Assuming that all savings come from profits and that all profits are reinvested we have that:

$$\frac{\dot{K}}{K} = (1 - \varpi)u \quad (4)$$

where $\varpi = wL/Y = 1 - rK/Y = w/q$ is the wage share. Given this assumption, there is no room in the model for an independent investment function.

Variations of real wages are given by a generic Phillips curve of the type:

$$\frac{\dot{w}}{w} = F(e), \quad F'(\cdot) > 0, \quad F''(\cdot) \geq 0 \quad (5)$$

indicating that the bargaining power of workers increases at an increasing pace as employment expands.

Finally, from the definition of wage-share we have that:

$$\frac{\dot{\varpi}}{\varpi} = \frac{\dot{w}}{w} - \frac{\dot{q}}{q} \quad (6)$$

In other words, a constant functional income distribution is only possible if variations in real wages follow variations in labour productivity. As a result, distribution depends on the interaction between technology and distributive conflict.

2.3 The dynamic system

Substituting (4) into (2) and then the result into (3), we have:

$$\frac{\dot{e}}{e} = (1 - \varpi)u - \frac{\dot{q}}{q} - n \quad (7)$$

Then, substituting (5) into (6) we obtain:

$$\frac{\dot{\varpi}}{\varpi} = F(e) - \frac{\dot{q}}{q} \quad (8)$$

For an exogenous growth rate of labour productivity and constant effective capacity utilisation, equations (7) and (8) form the original growth cycle model. They contain the basic

elements of a theory of economic fluctuations with the cycle emerging endogenously from the dynamic interaction of deterministic variables and not as the outcome of exogenous aleatory shocks.

The distributive cycle works as follows: an increase in the employment rate leads to an increase in the wage share, which decreases the profit share and thus capital accumulation. A reduction in capital accumulation decreases the rate of growth of output and consequently the rate of employment, leading to a decrease in the wage share and an increase in the profit share. The outcome of a higher profit share is faster capital accumulation because all profits are reinvested, increasing the rate of growth of output and employment. At this point the cycle restarts.

$$\begin{array}{l}
 e \uparrow \Rightarrow \varpi \uparrow \Rightarrow \frac{\dot{K}}{K} \downarrow \Rightarrow \frac{\dot{Y}}{Y} \downarrow \Rightarrow e \downarrow \\
 e \downarrow \Rightarrow \varpi \downarrow \Rightarrow \frac{\dot{K}}{K} \uparrow \Rightarrow \frac{\dot{Y}}{Y} \uparrow \Rightarrow e \uparrow
 \end{array}$$

3 A first extension of the model

The original growth cycle representation we have just described has been extended in a number of directions in the last fifty years.² However, little attention has been given to possible applications to the case of an open economy. Furthermore, Post Keynesian models have emphasised over the years the importance of demand constraints on growth. One of the most successful empirical regularities among them is Thirlwall's rule. It proposes that since countries cannot systematically sustain increasing balance-of-payments imbalances, there is an adjustment in aggregate demand that constrains growth.³

The introduction of aggregate demand issues in an open-economy set up leaves at least four questions to be answered. First, it is not possible to assume full capacity utilisation. Second, it is not clear how the rate of employment and income distribution interact with the external constraint. Third, while the hypothesis of equilibrium in the balance-of-payments is plausible for the long-run, in the short-term growth might deviate from the external constraint and it is necessary to understand the mechanism behind this adjustment process. Finally, once we allow the rate of growth of output to deviate from the BoPC we can go further and explore the implications of using an independent investment function.

In the remainder of the paper we modify the original model in order to address these issues. This section deals with the first two problems. We allow for variations in effective capacity utilisation while the rate of growth of output follows Thirlwall's rule. However, we assume that the economy never deviates from the balance-of-payments equilibrium condition and investment is still determined by savings. These two last assumptions are to be relaxed in the next section. From now on the model can be divided into three blocks of equations. Besides the original *(i)* supply conditions, and *(ii)* distributive conditions, we now have *(iii)* the external constraint.

²For a very recent review of the literature on some of the main theoretical and empirical contributions in this field, see Araújo et al (2017). In particular emphasis must be given to the importance of recent extensions of the model in explaining financial fluctuations and the great financial crisis based on Minsky's financial instability hypothesis (Keen, 2013; Sordi and Vercelli, 2012, 2014).

³The idea that growth is BoPC has been a crucial component of much demand-led growth theory since at least Prebisch (1959). However, it is the role of demand in defining the nature of the constraint that distinguishes the approach from other growth models (Razmi, 2016). For a literature review on some of the main theoretical and empirical contributions, see Thirlwall (2011).

3.1 Supply conditions

Once effective capacity utilisation is allowed to vary, from the Leontieff efficiency condition (1) it follows that:

$$\frac{\dot{u}}{u} = \frac{\dot{Y}}{Y} - \frac{\dot{K}}{K} \quad (9)$$

i.e., the rate of change in capacity utilisation now depends on the difference between the rate of growth of output and capital accumulation.

Following the Kaldorian literature, labour productivity gains are endogenous to the performance of the economy. Although the growth rate of labour supply is exogenous in our model, the growth rate of labour productivity is endogenously determined through a Kaldor-Verdoorn mechanism. This modification is necessary in order to change the nature of the model from one that is supply-side determined to a more Keynesian demand-led model. Therefore, productivity gains are supposed to be a function of effective capacity utilisation:⁴

$$\frac{\dot{q}}{q} = G(u), G'(\cdot) > 0 \quad (10)$$

Kaldor in particular developed different ways to endogenise technological change (Kaldor, 1957, 1961, 1966). For instance, in his technical progress function he anticipated some of the basic insights behind Arrow's learning-by-doing model. Traditional specifications assume $G(\cdot)$ to be a linear function of the actual growth rate of the economy. We avoid this road for at least two reasons. First, a linear specification is extremely arbitrary at this point in the analysis. Second, the traditional interpretation of the linear coefficients has been convincingly questioned by McCombie and Spreafico (2016) because it can be derived from a neoclassical production function.⁵

On the other hand, our specification still captures the concept of a learning-by-doing process associated with the presence of economies of scale in the use of capital. The basic idea is that to a great extent technical progress is labour saving and capital embodied. Nevertheless, machines must be operating in order for productivity gains to be effectively incorporated. Notice that since $u = \left(\frac{Y}{Y^*}\right) \left(\frac{Y^*}{K}\right)$ there are two possible channels for effective capacity utilisation to influence labour productivity. The first one is through an increase in the degree of utilisation of machines. Higher rates of idle capacity indicate that machinery has not been properly used leaving little room for learning-by-doing. The second one is through an increase in the productivity of machines. That is, the adoption of modern production techniques comes with spillover effects on workers' productivity.

⁴In his inaugural lecture at the University of Cambridge, Kaldor (1966, p. 10) considered the relation between productivity and output to be "a dynamic rather than a static relationship – between the rates of change of productivity and of output, rather than between the level of productivity and the scale of output". In this sense equation (10) is somehow an hybrid since we are establishing a link between the rate of change of productivity and the level of output.

⁵Needless to say that the problems of such production functions are well known. For a comprehensive discussion see Petri (2004) and Felipe and McCombie (2013). Moreover, it is easy to see that using G as a linear function of output's growth rate makes the model completely supply side again. Suppose $\frac{\dot{q}}{q} = \alpha_0 + \alpha_1 \frac{\dot{Y}}{Y}$, where α_0 and $0 < \alpha_1 < 1$ are parameters that capture a combination of increasing returns to scale, induced and exogenous technical change, greater efficiency in the use of resources, and the inter-sectoral reallocation of resources. From the Leontieff efficiency condition (1) we have $\frac{\dot{e}}{e} = (1 - \alpha_1) \frac{\dot{Y}}{Y} - \alpha_0 - n$. In steady-state $\frac{\dot{e}}{e} = 0$, hence, $\frac{\dot{Y}}{Y} = \frac{\alpha_0 + n}{1 - \alpha_1}$ and growth becomes supply-side. Setterfield (2006) and Gabriel et al (2016) among others have argued that the so called Verdoorn coefficient (α_1) could be endogenised. But then we go back to the traditional interpretation of G which has been shown to be invalid by McCombie and Spreafico (2016).

Sasaki (2013) has recently argued that making G a function of e would capture the view that technological change is driven by inter-class conflict. An increase in the employment rate is supposed to increase the bargaining power of workers and generate upward pressure on wages, leading capitalists to adopt labour saving technical changes. Different versions of the argument have been put forward by several authors (e.g. Naastepad, 2006; Dutt, 2006; Flaschel, 2015; for a review of endogenous technical change in alternative growth theories see Tavani and Zamparelli, 2017). Even though we do not deny the plausibility of such a mechanism, we are, in particular, more interested in incorporating endogenous technical progress as a learning process than as a result of inter-class conflict. Hein and Tarassow (2010) and Rezai (2012) are examples of contributions suggesting that the two formulations might not be incompatible.⁶

3.2 Distributive conditions

Keeping the income identity, once we allow the level of capacity utilisation to change, if all savings come from profits and a constant share s of those profits is reinvested we have that:

$$\frac{\dot{K}}{K} = s(1 - \varpi)u \quad (11)$$

Furthermore, we keep the same Phillips curve (5) for the real wage dynamics, and variations of the wage-share continue to be given by the difference between the rate of growth of wages and the rate of growth of labour productivity (10).

3.3 The external constraint

Suppose the following traditional functions for exports and imports:

$$X = X(Z), X'(\cdot) > 0 \quad (12)$$

$$M = M(Y), M'(\cdot) > 0 \quad (13)$$

where X are exports, M corresponds to imports, and Z is the rest of the world's output. Since we are abstracting from any price considerations, the real exchange rate is supposed to be constant and does not influence trade. For simplicity, it is also assumed that all trade consists in the exchanges of final goods. Equilibrium in trade, which in this framework approximates equilibrium in the balance-of-payments, implies:

$$X(Z) = M(Y)$$

Thus, we can easily show that:

$$\frac{\dot{Y}}{Y} = \rho \frac{\dot{Z}}{Z} = y_{BP} \quad (14)$$

where $\rho = \frac{dX}{dZ} \frac{Z}{X} / \frac{dM}{dY} \frac{Y}{M}$ is the ratio between foreign income elasticities of exports and imports, and y_{BP} is the BoPC growth rate. Notice that (14) is nothing other than Thirlwall's law.⁷

⁶One should note that Sasaki et al (2013) in an open economy Kaleckian model uses $G(u)$ but maintains the inter-class conflict interpretation making reference to Okun's law.

⁷From the equilibrium in trade condition we have $X(Z) = M(Y)$. Taking time derivatives this means $\frac{dX}{dZ} \dot{Z} = \frac{dM}{dY} \dot{Y}$. This last expression is equivalent to $\frac{dX}{dZ} \frac{Z}{X} \frac{\dot{Z}}{Z} X = \frac{dM}{dY} \frac{Y}{M} \frac{\dot{Y}}{Y} M$. Rearranging we have $\frac{dX}{dZ} \frac{Z}{X} \frac{\dot{Z}}{Z} X = \frac{dM}{dY} \frac{Y}{M} \frac{\dot{Y}}{Y} M$. But if trade is in equilibrium and is different from zero it follows $\frac{dX}{dZ} \frac{Z}{X} \frac{\dot{Z}}{Z} = \frac{dM}{dY} \frac{Y}{M} \frac{\dot{Y}}{Y}$ or $\frac{\dot{Y}}{Y} = \rho \frac{\dot{Z}}{Z}$. Moreover, it is straightforward from Euler's homogeneity theorem that if X and M are homogeneous functions, then ρ is constant.

Foreign trade income elasticities are dependent upon the level of diversification of the economy’s productive structure. A low level of diversification is associated with a high propensity to import which in turn implies a high income elasticity of imports. It is also associated with a low elasticity of exports because the economy will have few different types of goods to export in the face of increasing demand.

An extensive literature on complexity has stressed the positive relation between economic complexity and productive diversification (Hidalgo et al, 2007; Hausmann et al, 2014). Therefore, ρ can also be understood as a structural variable that captures the non-price competitiveness of an economy. Gouvea and Lima (2010, 2013), Romero and McCombie (2016) and Martins Neto and Porcile (2017) provide empirical evidence of such an interpretation.

Several methodologies have been used over the years to estimate Thirlwall’s rule – which range from Ordinary Least Squares (OLS) in first differences to Vector Error Correction (VEC) models, Fixed Effects (FE) models, panel Autoregressive Distributive Lag (pARDL) and Generalized Method of Moments (GMM) (for a review see Romero and McCombie, 2016). Here we provide some empirical evidence of our own using the ARDL cointegration technique from a sample of 17 OECD countries between 1960 and 2016. Details of the estimation procedure and the innovative aspects of our exercise are presented in the Econometric Appendix at the end of the paper.

Figure 1 shows that actual and estimated growth rates are indeed very close, thus supporting the hypothesis that for those economies growth in the long-run follows the external constraint.

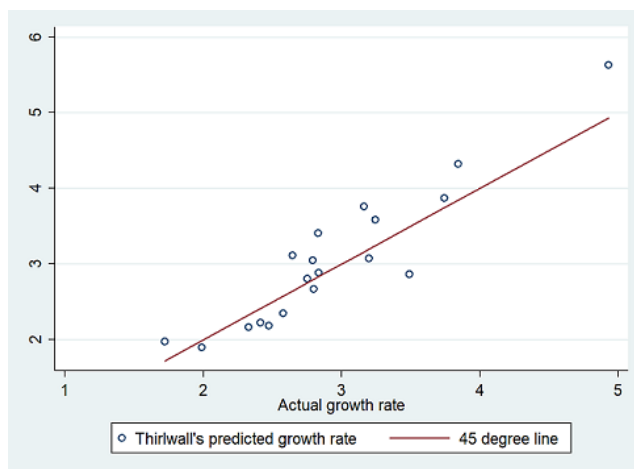


Figure 1: Actual and estimated growth rates

The Kaldorian roots of the rule derive not only from the fact that Thirlwall himself is the biographer and literary executor of the Cambridge economist but also because in his last writings Kaldor gave special attention to the role of exports in economic development. In his own words, “the rate of economic development of a region is fundamentally governed by the rate of its exports” (Kaldor, 1970, p. 342). Assuming for simplicity that $X(\cdot)$ and $M(\cdot)$ in (12) and (13) are homogenous functions, we have from Euler’s theorem that ρ is constant. In the absence of the ability to attract a permanent net inflow of capital from abroad, the rate of growth of the economy is constrained by the requirement that it achieves current account balance.

3.4 The dynamic system

Substituting (10) and (14) into (3) we have:

$$\frac{\dot{e}}{e} = y_{BP} - G(u) - n$$

or

$$\dot{e} = [y_{BP} - G(u) - n] e = f_1(e, \varpi, u) \quad (15)$$

Variations in the rate of employment are entirely determined by aggregate demand dynamics. On the one hand, the external constraint rules the rate of growth of output. Thus, a relaxation of the BoPC increases employment. On the other hand, labour productivity follows our learning-by-doing mechanism. Therefore, an increase in the rate of effective capacity utilisation actually reduces employment through an increase in productivity. This of course is a partial effect since u itself is an endogenous variable.

Making use of (5), (6) and (10), distributive dynamics become:

$$\frac{\dot{\varpi}}{\varpi} = F(e) - G(u)$$

or

$$\dot{\varpi} = [F(e) - G(u)] \varpi = f_2(e, \varpi, u) \quad (16)$$

Equation (16) is basically the same as (8) and states that variations in functional income distribution follow the difference between the rate of growth of real wages and labour productivity. A stable wage-share can only be obtained if real wages grow at the same pace as productivity gains. Moreover, employment and effective capacity utilisation have opposite effects on the wage-share. An increase in the employment rate increases worker's bargaining power allowing a rise in wages which in turn has a positive impact on the wage-share. On the other hand, an increase in the rate of capacity utilisation increases labour productivity through the Kaldor-Verdoorn mechanism reducing the share of wages in income.

Finally, substituting (11) and (14) into (9) we obtain the equation for the dynamics of capacity utilisation:

$$\frac{\dot{u}}{u} = y_{BP} - s(1 - \varpi)u$$

or

$$\dot{u} = [y_{BP} - s(1 - \varpi)u] u = f_3(e, \varpi, u) \quad (17)$$

The effect of the rate of growth of output on effective capacity utilisation is straightforward. Higher demand increases capacity utilisation. Nevertheless, an increase in capacity utilisation or a reduction in the wage-share decrease u . This is because both have a positive impact on capital accumulation through savings.

The dynamic system of the modified model is formed by equations (15)-(17).

3.5 Equilibrium points, local stability analysis and Hopf bifurcation

In steady state $\dot{e}/e = \dot{\varpi}/\varpi = \dot{u}/u = 0$. This gives us the following equilibrium conditions:

$$y_{BP} = G(u) + n \quad (18)$$

$$F(e) = G(u) \quad (19)$$

$$y_{BP} = s(1 - \varpi)u \quad (20)$$

Equation (18) shows that in equilibrium the sum of labour productivity and labour force growth rates must equal the BoPC growth rate. Nevertheless, the so called “natural rate of growth” is endogenous, pro-cyclical and determined by the external constraint as several empirical studies have shown to be the case (León-Ledesma and Thirlwall, 2002; Libânio, 2009; León-Ledesma and Lanzafame, 2010; Lanzafame, 2014). The equilibrium condition (19) simply states that real wages and labour productivity must grow at the same rate in order for the wage share to be constant. Finally, condition (20) implies that the rate of growth of output must equal the rate of growth of the capital stock so as not to generate permanently increasing or decreasing idle capacity.

This last result is particularly compelling because it represents a simple and elegant formulation of “Say’s Law in reverse”. Still, we further improve it in the next section when an independent investment function is introduced. A broader discussion of the relation between y_{BP} and capital accumulation as well as a solution with similar characteristics can be found in Dávila-Fernández et al (2017).

Given the equilibrium conditions (18)-(20) we can state and prove the following Proposition regarding the existence and uniqueness of an internal equilibrium.

Proposition 1 *The dynamic system (15)-(17) has a unique internal equilibrium point given by:*

$$e^* = F^{-1}(y_{BP} - n) \quad (21)$$

$$\varpi^* = 1 - \frac{y_{BP}}{sG^{-1}(y_{BP} - n)} \quad (22)$$

$$u^* = G^{-1}(y_{BP} - n) \quad (23)$$

Proof. See Mathematical Appendix A.1. ■

Looking at equations (21) and (23) it is interesting to note that an increase in the rate of growth of output (which is determined by the external constraint) increases both the rate of employment and the rate of effective utilisation. This relation resembles Okun’s rule. The result is also in line with recent developments of the so called “utilisation controversy” where Nikiforos (2013, 2016) in particular has demonstrated that firms tend to utilise their capital more as output grows, conditional on the behaviour of increasing returns to scale. Moreover, a higher growth rate of the labour force is also associated with a lower rate of employment and effective capacity.

Lastly, the relation between the BoPC growth rate and the wage-share is not univocal.

Notice that (22) can be written as $\varpi^* = 1 - \frac{y_{BP}}{su^*}$ and therefore $\frac{d\varpi^*}{dy_{BP}} = \frac{\frac{du^*}{dy_{BP}} \frac{y_{BP}}{u^*} - u^*}{u^{*2}}$. If $\frac{\partial u^*}{\partial y_{BP}} \frac{y_{BP}}{u^*} > s$, an increase in y_{BP} increases the wage share. This is because income distribution is the adjustment variable that guarantees a constant rate of capacity utilisation. Higher growth increases u^* and if this effect is too strong (above s) the wage share must be reduced in order to keep capital accumulation equal to the rate of growth of output. On the contrary, for $\frac{\partial u^*}{\partial y_{BP}} \frac{y_{BP}}{u^*} < s$ a relaxation of the external constraint harms the wage share. In other words, for a propensity to save larger than the sensibility of u^* to the rate of growth of output, the wage share required to keep capacity utilization constant will be lower.

Next, we turn to the investigation of the local stability properties of the equilibrium points defined by equations (21)-(23).

Proposition 2 *If the sensitivity of real wages to changes in the employment rate is sufficiently low and such that*

$$F'(e^*) < \frac{s(1 - \varpi^*)u^*}{e^*} = \frac{y_{BP}}{F^{-1}(y_{BP} - n)}$$

the internal equilibrium (e^, ϖ^*, u^*) of the dynamic system (15)-(17) is locally asymptotically stable.*

Proof. See Mathematical Appendix A.2. ■

However, for higher values of $F'(e^*)$, it may happen that $F'(e^*) > s(1 - \varpi^*)u^*/e^*$. Thus, the dynamic behaviour of the model may drastically change, from the qualitative point of view, as the sensitivity of real wages to changes in e increases, with all the other parameters remaining constant. Using $F'(e^*)$ as a bifurcation parameter, our purpose is now to apply the Hopf Bifurcation Theorem (HBT) for 3D systems (see Gandolfo, 2009) to show that persistent cyclical behaviour of the variables can emerge as $F'(e^*)$ is increased.

Proposition 3 *For values of $F'(e^*)$ in the neighbourhood of the critical value*

$$F'(e^*)_{HB} = \frac{s(1 - \varpi^*)u^*}{e^*} \quad (24)$$

the dynamic system (15)-(17) has a family of periodic solutions.

Proof. See Mathematical Appendix A.3. ■

This result is in line with Goodwin's (1967) aim of generating cycles rooted in the functioning of the labour market and the dynamics of distributive conflict. Periodic solutions emerge as a result of an increase in the sensitivity of workers' wage demands to the employment rate.

3.6 Numerical Simulations

In this section, we present numerical simulations to show that the Hopf bifurcation occurring for values in the neighbourhood of $F'(e^*)$ defined in (24) is supercritical so that the emerging limit cycle is stable. The exercise also illustrates that, under plausible settings, the internal equilibrium and oscillations have economic meaning. To this end, we must first of all choose functional forms for the two behavioural equations of the model, namely, $F(\cdot)$ and $G(\cdot)$. We specify these functions as follows:

$$F(e) = a(e - \bar{e}) \quad (25)$$

$$G(u) = bu^\beta \quad (26)$$

where \bar{e} is the rate of employment above which workers are able to obtain real wage increases. The functional form we have chosen in (25) captures the Marxian reserve army effect and should not be confused with some sort of non accelerating inflation rate of unemployment (NAIRU).⁸ On the other hand, the parameter β in equation (26) captures the presence of increasing returns to scale for the labour productivity growth function. Finally, a and b are adjustment parameters.

⁸Notice that (25) can be obtained from Goodwin's (1967) original formulation of the Phillips curve. Suppose $F(e) = -a_1 + ae$. Name $a_1 = a\bar{e}$. Therefore, $F(e) = -a\bar{e} + ae = a(e - \bar{e})$. We use the last expression for convenience.

Recalling the expressions given in equations (21)-(23), equilibrium values become:

$$e^* = \bar{e} + \frac{y_{BP} - n}{a} \quad (27)$$

$$\varpi^* = 1 - \frac{y_{BP}}{s \left(\frac{y_{BP} - n}{b} \right)^{1/\beta}} \quad (28)$$

$$u^* = \left(\frac{y_{BP} - n}{b} \right)^{1/\beta} \quad (29)$$

In order to choose plausible parameter values we have considered the evidence given in a number of empirical studies for the Phillips curve and the Kaldor-Verdoorn mechanism. They were also adjusted in order to provide outcomes with economic meaning:

$$\begin{aligned} y_{BP} &= 0.03105, \quad n = 0.01, \quad s = 0.3, \quad \beta = 1.17 \\ a &= 0.0372, \quad \bar{e} = 0.28986, \quad b = 0.091522 \end{aligned} \quad (30)$$

Taking $F'(e^*) = a$ as the bifurcation parameter, these values imply that $a_{HB} \approx 0.0345$. Consequently, in our simulation, we used a value of a slightly higher than this.

Figure 2a displays the solution path for two different initial values (e_0, ϖ_0, u_0) equal to $(0.92, 0.6, 0.35)$ and $(0.77, 0.65, 0.24)$, both converging to the limit cycle around $(e^*, \varpi^*, u^*) = (0.85572, 0.63653, 0.28475)$. Figure 2b plots the time series of our simulations.

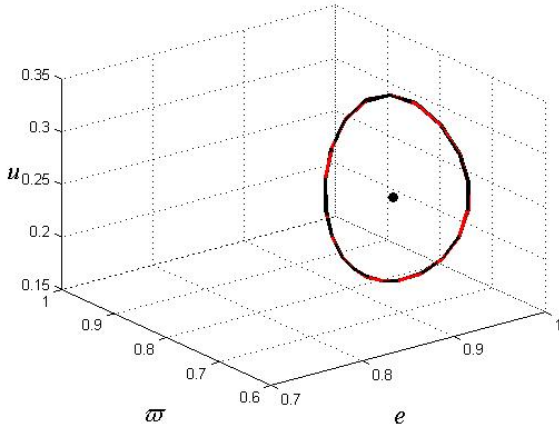


Figure 2a: Limit cycle 3D

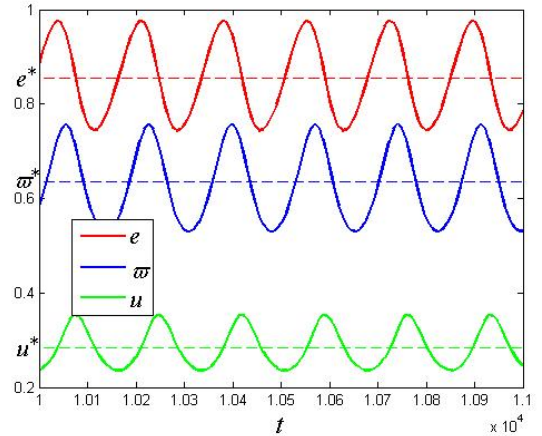


Figure 2b: Time series 3D

Taking a closer look at the figures above, we can attempt to sketch a description of the dynamic interactions among the three variables along any given cycle. An increase in the employment rate leads to an increase in the wage share, which decreases the profit share and thus capital accumulation. A reduction in capital accumulation increases the effective rate of capacity utilisation because the rate of growth of output is given and determined by Thirlwall's rule. The increase in capacity utilisation increases the rate of growth of labour productivity through our Kaldor-Verdoorn mechanism reducing the rate of employment and the wage share, leading to an increase in the profit share. The outcome of a higher profit share is faster capital accumulation, reducing capacity utilisation and increasing the rate of

employment. At this point the cycle restarts:

$$\begin{aligned}
 e \uparrow &\Rightarrow \varpi \uparrow \Rightarrow \frac{\dot{K}}{K} \downarrow \Rightarrow \frac{\dot{u}}{u} \uparrow \Rightarrow e \downarrow \\
 e \downarrow &\Rightarrow \varpi \downarrow \Rightarrow \frac{\dot{K}}{K} \uparrow \Rightarrow \frac{\dot{u}}{u} \downarrow \Rightarrow e \uparrow
 \end{aligned}$$

4 A second extension of the model

As briefly discussed at the beginning of the previous section, while the hypothesis of equilibrium in the balance-of-payments is plausible in the long-run, for the short-run the story is different. Moreover, if we are to fully embed Goodwin's fundamental insight that trend and cycle are indissolubly fused in our model, it is perfectly possible, as indeed is the case, that over the business cycle growth deviates from the external constraint. How actual growth adjusts to the BoPC and interacts with the rest of the dynamic system is the question we address in this section.

In an open economy without government the expenditure identity is given by:

$$Y = C + I + X - M$$

where C stands for consumption, I is investment, X corresponds to exports, and M stands for imports. It immediately follows that:

$$S - I = X - M \tag{31}$$

with savings, S , equal to total output minus consumption.

Hence, equilibrium in the current account, $X = M$, implies that $S = I$ and we have $\frac{S}{K} = \frac{I}{K}$. However, as already shown, from $X = M$ we obtain y_{BP} , while $\frac{S}{K} = s(1 - \varpi)u$ with ϖ and u determined in steady state by (22) and (23), respectively. This means that an independent investment function would actually make the model overdetermined since S and I would be equal only by chance.

Once we allow actual growth rates to deviate from the external constraint, i.e. outside equilibrium $X = M$ does not necessarily hold, we are able to introduce an independent investment function. Accordingly, the model developed must go through two important changes, one in the distributive conditions block and one in the external constraint block.

4.1 Supply conditions

There are no changes in the supply conditions of the economy. Starting from the initial Leontieff production function we have that variations in effective capacity utilisation adjust the difference between the rate of growth of output and capital accumulation. Analogously, variations in the employment rate adjust to the growth rate of the economy and variations in labour productivity. Last but not least, labour productivity continues to be modelled as a function of effective capacity utilisation.

4.2 Distributive conditions

The determination of investment is central to Keynesian theories of effective demand. Equations (4) and (11) resulted from the assumption that all profits or a share of them were

reinvested. Dropping this hypothesis opens the door to the use of an independent investment function. In this respect, the accumulation function is critical for the properties and implications of the model. Unfortunately, there is considerable disagreement over the specification of this function (see Skott, 2012 for a discussion of the topic).

For the purposes of this paper we adopt the following general specification:

$$\frac{I}{K} = H(\varpi, u), H_{\varpi} < 0 \text{ and } H_u > 0 \quad (32)$$

The intuition of the expression above is similar to the one discussed by Bhaduri and Marglin (1990) and is recurrent in the Kaleckian literature. The basic idea is that profitability and capacity utilisation are used by investors as predictors of marginal profitability on new investment and the future state of demand, respectively. According to Bhaduri and Marglin (p. 380), this investment function has the analytical advantage of separating the “demand side” impact on investment operating through the acceleration effect of higher capacity utilisation from the “supply side” impact operating through the cost-reducing effect of a lower real wage and higher profit share.

A possible alternative would be to make investment a function only of the accelerator effect.⁹ This route is also pursued by Skott (1989, 2012) in a Harrodian set up. His contribution is particularly important because he presents a strong critique of the Kaleckian formulation. However, even though he makes an appealing defence of the Harrodian case, we chose to stick to equation (32). Our reasons are threefold.

First, empirical evidence does give support to the hypothesis that investment depends to some degree on the functional income distribution (Stockhammer et al, 2009; Onaran and Galanis, 2014, 2016). Second, the model developed in this section does not rely on the extension of the standard short-run Keynesian stability condition to the long-run. That is, we do not assume that investment is less sensitive than savings to variations in the utilisation rates of capital. To the best of our knowledge, this was the main objection against the Kaleckian investment function. Finally, having H as a function of ϖ is required in order to generate distributive cycles in our model. A different alternative would be to assume that $\frac{\dot{Y}}{Y}$ is a negative function of the wage-share (as does Skott). Even though we do not deny the plausibility of such a mechanism, we present an alternative one that we think better suits an open economy set up.

4.3 The external constraint

Although the BoPC growth model is addressed to the investigation of the long-run, it also has profound implications for short-run dynamics. Few studies are devoted to the analysis of how deviations from long-run paths are generated and corrected.¹⁰ What happens in an open economy if the actual growth rate causes balance-of-payments disequilibrium, which is not automatically corrected by relative prices, so that the growth of income has to adjust to bring the growth of imports and exports into line?

If the economy is growing faster than the BoPC it means imports are growing faster than exports and therefore from (31) that investment is growing faster than savings. Leaving aside any considerations about the level of international reserves of a country, if investment is

⁹Different specifications of a flexible accelerator can be found in the literature and of course in Goodwin himself (e.g. Goodwin, 1948, 1951; Asada et al, 2003; Chiarella et al, 2005).

¹⁰Soukiazis (2012, 2014) and Garcimartin et al (2016) are recent remarkable exceptions, ones that formally address the issue although from a different perspective.

growing faster than savings, then the economy is (or will be) accumulating debt. An increase in debt on the other hand is related to an increase in risk perception which indicates that at some point lenders might limit access to credit. The simple increase in risk leads to an increase in the interest rate which also contributes to a reduction of expenditure (both in terms of consumption and investment). The intensity of this adjustment depends on how creditors perceive the behaviour of the borrower. This corresponds to the traditional BoPC adjustment and in the extreme case one should expect a balance-of-payments crisis.

On the other hand, if the rate of growth of output is below what is determined by Thirlwall's rule, exports are growing faster than imports which in turn implies that savings are growing faster than investment. In other words, the rest of the world is accumulating debt with this country. At first such a process could continue without limits as long as the domestic economy is willing to be a global creditor. However, two constraints might sooner or later appear. First, at some point the country might fear not being paid and force borrowers to meet their obligations. But then, imports of the debtor country will be reduced, which is equivalent to saying that exports of the surplus country will be lower, adjusting the balance of payments.

Another alternative is that the rest of the world, understanding that being in extreme debt is damaging to their interests (even politically speaking), might try to force the lender country to reduce its surplus. In this case, the economy will have to increase its expenditures increasing as a consequence its imports and restoring equilibrium in the balance of payments. This last situation resembles current negotiations led by the United States in demanding a reduction of current account surpluses by China and Germany.

A first approximation that represents what has been so far described is:

$$\dot{y} = D(y_{BP} - y), \quad D' > 0, \text{ and } D(0) = 0 \quad (33)$$

where we have set $y = \frac{\dot{Y}}{Y}$ in order to simplify the notation.

However, from the expenditure identity it is also possible to obtain a growth rate of the economy such that (31) is always satisfied. In reasoning with some similarities to the one presented here, Garcimartin et al (2016) called it the short-run BoPC rate of growth. Given the relations used in this paper, the rate of growth of output becomes:

$$y = \frac{\left(\frac{\varpi}{1-\varpi}\right) [F(e) - G(u)] + \Omega \left[\frac{H_{\varpi}\dot{\varpi} + H_u\dot{u}}{H(\varpi; u)} + H(\varpi; u) \right] + (1 - \Omega) \frac{\dot{X}}{X}}{\theta + (1 - \theta)\pi} \quad (34)$$

where $\theta = \frac{S}{S+M}$ and $\Omega = \frac{I}{I+X} \in [0; 1]$.¹¹ Looking at the expression above, $\left(\frac{\varpi}{1-\varpi}\right) [F(e) - G(u)]$ captures the “consumption effect” on growth, $\Omega \left[\frac{H_{\varpi}\dot{\varpi} + H_u\dot{u}}{H(\varpi; u)} + H(\varpi; u) \right]$ is the “investment effect”, and $(1 - \Omega) \frac{\dot{X}}{X}$ stands for the “foreign demand effect”. Notice that exports are the only true autonomous demand component following the Kaldorian tradition.

¹¹Equation (31) can be rewritten as $S + M = I + X$. Taking logarithms and time derivatives, we have a dynamic version of this macroeconomic identity given by $\theta \frac{\dot{S}}{S} + (1 - \theta) \frac{\dot{M}}{M} = \Omega \frac{\dot{I}}{I} + (1 - \Omega) \frac{\dot{X}}{X}$, where $\theta = \frac{S}{S+M}$ and $\Omega = \frac{I}{I+X} \in [0; 1]$. In our economy, savings come from profits, $\frac{\dot{S}}{K} = s(1 - \varpi)u$. Therefore, making use of (3) and (9) we obtain that $\frac{\dot{S}}{S} = -[F(e) - G(u)] \left(\frac{\varpi}{1-\varpi}\right)$. Moreover, from our import function, $\frac{\dot{M}}{M} = \pi y$, where $\pi = \frac{dM}{dY} \frac{Y}{M}$ is the income elasticity of imports. Finally, recall that $\frac{\dot{K}}{K} = \frac{I}{K} = H(\varpi; u)$ so that $\frac{\dot{I}}{I} = \frac{H_{\varpi}\dot{\varpi} + H_u\dot{u}}{H(\varpi; u)} + H(\varpi; u)$. Substituting those expressions in the dynamic macroeconomic condition we obtain the expression for y given in (34).

Equation (34) shows that the impact of all cyclical variables on the rate of growth of output is difficult to determine. Suppose for a moment that θ and Ω are constant. Then, if an increase (decrease) in the wage-share increases (decreases) consumption more than it decreases (increases) investment, the rate of growth of output will be higher (lower). In contrast, an increase in capacity utilisation only increases growth if it causes an increase in investment that overcomes the reduction in consumption. This is because an increase in u increases the rate of growth of labour productivity which in turn reduces the wage-share. Finally, variations in the rate of employment have an effect similar to variations in the wage-share because they operate through the latter. Nevertheless, allowing θ and Ω to vary results in signals becoming almost completely undetermined. This indeterminacy resembles the profit-led vs wage-led controversy in the Kaleckian literature (see Blecker, 2016 for a discussion of the topic).

It is outside the scope of this paper to take a position in the debate or propose a particular solution for that discussion. Still, it is not possible to ignore the effects of cyclical variables in the adjustment process of y . Therefore we generalise (33) in order to take into account these cyclical motions and write:

$$\begin{aligned} \dot{y} &= D(y_{BP} - y, e - e^*, \varpi - \varpi^*, u - u^*), \text{ with } D(y_{BP}, e^*, \varpi^*, u^*) = 0 \\ D_y &< 0, D_e \geq 0, D_{\varpi} \geq 0, D_u \geq 0, \\ D_e|_{e=e^*} &= 0, D_{\varpi}|_{\varpi=\varpi^*} = 0, D_u|_{u=u^*} = 0 \end{aligned}$$

where the only additional conditions we impose are that the partial derivatives of $D(\cdot)$ with respect to employment, wage-share and effective capacity are equal to zero at their respective equilibrium values. In other words, variations in the growth rate occur only when the system is outside equilibrium.¹²

4.4 The dynamic system

Substituting (10) into (3) we have:

$$\frac{\dot{e}}{e} = y - G(u) - n$$

or

$$\dot{e} = [y - G(u) - n]e = g_1(e, \varpi, u, y) \quad (35)$$

The interpretation of the first dynamic equation remains the same with the only difference that now the actual growth rate of output is also an endogenous variable.

Distributive dynamics continue to be given by:

$$\frac{\dot{\varpi}}{\varpi} = F(e) - G(u)$$

or

$$\dot{\varpi} = [F(e) - G(u)]\varpi = g_2(e, \varpi, u, y) \quad (36)$$

Taking account of (9), (10) and (32), variations in effective capacity utilisation are such that:

$$\frac{\dot{u}}{u} = y - H(\varpi, u)$$

¹²Notice that in steady state $F(e) = G(u)$, $\frac{H_{\varpi}\dot{\varpi} + H_u\dot{u}}{H(\varpi;u)} = 0$ and $H(\varpi;u) = y$ so that equation (34) becomes $y = \frac{(1-\Omega)\frac{\dot{X}}{X}}{\theta - \Omega + (1-\theta)\pi}$. However, once equilibrium in the current account is re-established $\theta = \Omega$, and $y = \frac{\dot{X}/X}{\pi} = y_{BP}$.

or

$$\dot{u} = [y - H(\varpi, u)]u = g_3(e, \varpi, u, y) \quad (37)$$

An increase in demand above capital accumulation increases effective capacity utilisation. The reason for this is easy to explain: production is increasing faster than the expansion of productive capacity. Notice that capital accumulation is now given by the independent investment function.

Finally, we simply restate the adjustment mechanism between the rate of growth of output and the external constraint:

$$\dot{y} = D(y_{BP} - y, e - e^*, \varpi - \varpi^*, u - u^*) = g_3(e, \varpi, u, y) \quad (38)$$

Equations (35)-(38) form the dynamic system of our second modified model.

4.5 Local stability analysis and Hopf bifurcation

In steady-state $\dot{e}/e = \dot{\varpi}/\varpi = \dot{u}/u = \dot{y} = 0$. This gives us the following conditions:

$$y = G(u) + n \quad (39)$$

$$F(e) = G(u) \quad (40)$$

$$y = H(\varpi; u) \quad (41)$$

$$0 = D(y_{BP} - y, e - e^*, \varpi - \varpi^*, u - u^*) \quad (42)$$

The interpretation of equations (39)-(42) is very similar to the interpretation we have given for the previous model. From (40), it follows that real wages and labour productivity must grow at the same rate in order to obtain a constant wage-share. Furthermore, the rate of growth of output is such that the natural rate of growth, capital accumulation and Thirlwall's law are equal to the former three adjusting to the last one.

In analogy with what was done with regard to the previous version of the model, we now turn to the investigation of the local stability properties of the equilibrium points. As a first step, we state and prove the following Proposition, regarding the conditions for a unique economically meaningful internal equilibrium.

Proposition 4 *The dynamic system (35)-(38) has a unique internal equilibrium point given by:*

$$e^* = F^{-1}(y_{BP} - n) \quad (43)$$

$$\varpi^* = H^{-1}[y_{BP}, G^{-1}(y_{BP} - n)] \quad (44)$$

$$u^* = G^{-1}(y_{BP} - n) \quad (45)$$

$$y^* = y_{BP} \quad (46)$$

Proof. See Mathematical Appendix A.4. ■

Comparing equations (43) and (45) with (21) and (23) we see that they are exactly the same. Equation (44) on the other hand comes with some novelty because of the investment function. Moreover, the net effect of growth on the wage-share continues to be undetermined but now depends on the shape of the investment function. Furthermore, for a given rate of growth of output (determined by Thirlwall's law) we obtain a rate of employment and

of capacity utilisation that depends on the bargaining power of workers and on the Kaldor-Verdoorn mechanism, respectively. After that, the income distribution will adjust in order to ensure that capital accumulation is such as to maintain the equilibrium rate of effective capacity utilisation.¹³

Notice also that there are two ways to permanently increase the rate of employment of the economy. The first involves a deep transformation of the economic structure in favour of productive diversification and technological complexity in order to ensure a higher y_{BP} . The second is related to a reduction in the bargaining power of workers. However, this second mechanism does not rely on the problematic neoclassical factor demand curves but works as follows. In order to obtain a constant wage-share, real wages and labour productivity must grow at the same rate. Highly combative workers translate small increases in employment into large increases in real wages. This means that, for a given rate of growth of labour productivity, the employment rate that ensures that real wages and productivity grow at the same rate will be lower the higher the capacity of workers to increase their wages. Therefore, a reduction in bargaining power of workers can increase equilibrium employment.

With regard to this unique internal equilibrium point, we can now state and prove the following Proposition regarding its local stability.

Proposition 5 *If the sensitivity of real wages to changes in the employment rate is sufficiently low and such that*

$$F'(e^*) < \frac{H_u(\varpi^*, u^*)u^*}{e^*} = \frac{H_u(\varpi^*, u^*)G^{-1}(y_{BP} - n)}{F^{-1}(y_{BP} - n)}$$

the internal equilibrium $(e^, \varpi^*, u^*, y^*)$ of the dynamic system (35)-(38) is locally asymptotically stable.*

Proof. See Mathematical Appendix A.5. ■

Still, for higher values of $F'(e^*)$, it may happen that $F'(e^*) > H_u(\varpi^*, u^*)u^*/e^*$. Thus, the dynamic behaviour of the model may drastically change, from the qualitative point of view, as the sensitivity of real wages to changes in e increases, with all the other parameters remaining constant. We pursue a route similar to the one we have followed in the section and use $F'(e^*)$ as a bifurcation parameter in order to study the possibility of persistent cyclical behaviour.

Proposition 6 *For values of $F'(e^*)$ in the neighbourhood of the critical value such that*

$$F'(e^*) = \frac{H_u(\varpi^*; u^*)u^*}{e^*}$$

the dynamic system (35)-(38) admits a family of periodic solutions.

Proof. See Mathematical Appendix A.6. ■

Once more cyclical behavior is rooted on the labour market and distributive conflict.

¹³This last conclusion resembles Kaldor's (1957) contribution to the "Capital Controversies" because capital accumulation was supposed to adjust to the natural growth rate through a redistribution between wages and profits. At that time, however, the discussion concerned closed economies, a very different scenario from the one discussed here. Still, we would say that the similarity is not negligible.

4.6 Numerical Simulations

We proceed by presenting a numerical simulation exercise to illustrate the existence and economic interpretation of the limit cycle whose existence was proved in the last subsection. Following what was done in section 3.6, we first determine functional forms for the behavioural equations. We maintain equations (25) and (26) for $F(\cdot)$ and $G(\cdot)$. Therefore, there are only two behavioural equations missing, namely, $H(\cdot)$ and $D(\cdot)$ for which we choose the following specifications:

$$H(\varpi, u) = c_1 - c_2\varpi + c_3u \quad (47)$$

$$D(y_{BP} - y, e - e^*, \varpi - \varpi^*, u - u^*) = d(y_{BP} - y) + f_1(e - e^*)^3 + f_2(\varpi - \varpi^*)^3 + f_3(u - u^*)^3 \quad (48)$$

where d is the adjustment parameter of the growth rate of output to the BoPC and f_i with $i = \{1, 2, 3\}$ stand for the influence of the other cyclical variables on growth. A cubic form for the deviations of employment, wage share and effective capacity utilisation was preferred over a quadratic formulation because it allows for changes in the signal of the effect if deviations occur upwards or downwards.

Recalling (43)-(46), equilibrium values become:

$$e^* = \bar{e} + \frac{y_{BP} - n}{a} \quad (49)$$

$$\varpi^* = \frac{c_3}{c_2} \left(\frac{y_{BP} - n}{b} \right)^{1/\beta} + \frac{c_1 - y_{BP}}{c_2} \quad (50)$$

$$u^* = \left(\frac{y_{BP} - n}{b} \right)^{1/\beta} \quad (51)$$

$$y^* = y_{BP} \quad (52)$$

Parameter values were chosen in accordance with the magnitude of the ones found in several empirical studies for the Phillips curve, the Kaldor-Verdoorn mechanism, and the investment function. However, to the best of our knowledge, there are no estimates for the last equation. A careful analysis of $D(\cdot)$ would have to rely on country-specific time series techniques because f_i parameters are supposed to have a different combination of signs for different economies (as the wage-led vs profit-led debate shows). Nevertheless, in order to have a preliminary approximation of these magnitudes, we estimated $D(\cdot)$ using the panel built on the previous section to estimate Thirlwall's law and assuming for a moment that $f_i = 0$.

Table 1 reports the estimates of the Fixed Effects (FE) regression:

Dependent variable: \dot{y}	
$y_{BP} - y$	0.6027352***
c	-0.0810926
Observations	868
R ² within	0.3050

Table 1: FE estimations of $D(\cdot)$. **, * and *** are 10%, 5% and 1% of significance

A positive adjustment coefficient of 0.6 is in line with the theoretical discussion presented in this section. Given that we cannot reject the null hypothesis of an intercept equal to zero even at the 10% of significance, in steady state the rate of growth of output converges (or fluctuates) around the BoPC.

Accordingly, for the numerical simulations, we use the following parameter values, which were also adjusted in order to provide outcomes with economic meaning:

$$\begin{aligned}
 y_{BP} &= 0.03105, \quad n = 0.01, \quad a = 0.0422 \\
 \bar{e} &= 0.28986, \quad b = 0.091522, \quad \beta = 1.17 \\
 c_1 &= 0.03061, \quad c_2 = 0.05, \quad c_3 = 0.11407 \\
 d &= 0.6, \quad f_1 = 0, \quad f_2 = \pm 0.75, \quad f_3 = 0
 \end{aligned}$$

There are eight possible combinations of f_i that can provide different cyclical dynamics. We chose to set f_1 and f_3 equal to zero in order to focus on income distribution. This of course does not have necessarily to be the case. Nevertheless, it allows the model to provide some specific insights into the relation between the income distribution and growth. A positive f_2 comes near to the so called wage-led case because over the cycle an increase in the wage share increases consumption more than it decreases investment and therefore increases the rate of growth of output. Analogously, a negative f_2 approaches the profit-led case.

Taking $F'(e^*) = a$ as the bifurcation parameter it turns out that $a_{HB} \approx 0.0394$ and for the simulation we used a value slightly higher than this. Figure 3a displays the solution path for two different initial values $(e_0, \varpi_0, u_0, y_0)$ equal to $(0.9, 0.6, 0.4, 0.04)$ and $(0.77, 0.65, 0.24, 0.2)$ when $f_2 = 0.75$. Both trajectories converge to the limit cycle around $(e^*, \varpi^*, u^*, y^*) = (0.78868, 0.64083, 0.28475, 0.03105)$. Figure 3b plots the time series for the first trajectory. This confirms that the Hopf bifurcation is supercritical and that, as consequence, the emerging persistent periodic solution is stable.

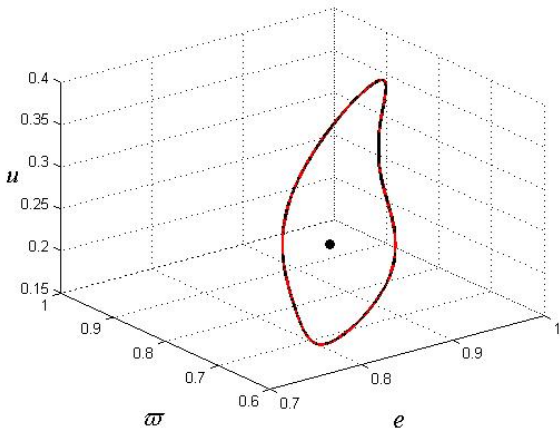


Figure 3a: Limit cycle “wage-led” economy

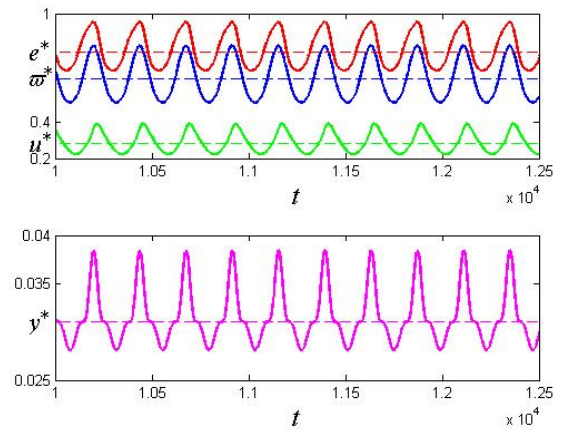


Figure 3b: Time series “wage-led” economy

From the figures above we can sketch a description of the dynamic interactions of the four variables over the cycle. These effects can now be divided in two groups with different characteristics, which are not easy to separate. An increase in the employment rate leads to an increase in the wage share. On the one hand this reduces capital accumulation, creating pressure for an increase in capacity utilisation. On the other hand, given that an increase in the wage-share increases consumption more than it decreases investment, there is going to be an increase in the rate of growth of output which in turn creates pressure for an increase in employment and the rate of capacity utilisation. The increase in the employment rate repeats

the narrative while the increase in utilisation brings downward pressure on employment and the wage share through the Kaldor-Verdoorn mechanism.

A reduction in the rate of employment reduces the wage share. This increases capital accumulation and *ceteris paribus* reduces the rate of effective utilisation. Nevertheless, a reduction in the wage share reduces the rate of growth of output, bringing downward pressure on employment and capacity utilisation. The reduction in employment has the same effects we have just described while a reduction in utilisation has as outcome an increase in employment and wage share because of Kaldor-Verdoorn.

When $f_2 = -0.75$ we were also able to find a supercritical Hopf bifurcation with a periodic stable solution around the same equilibrium as before. However, the limit cycle lies outside values with an economic interpretation. Figure 4 plots the time series of our simulation for initial values (e_0, ϖ_0, u_0) equal to $(0.9, 0.6, 0.4, 0.04)$.

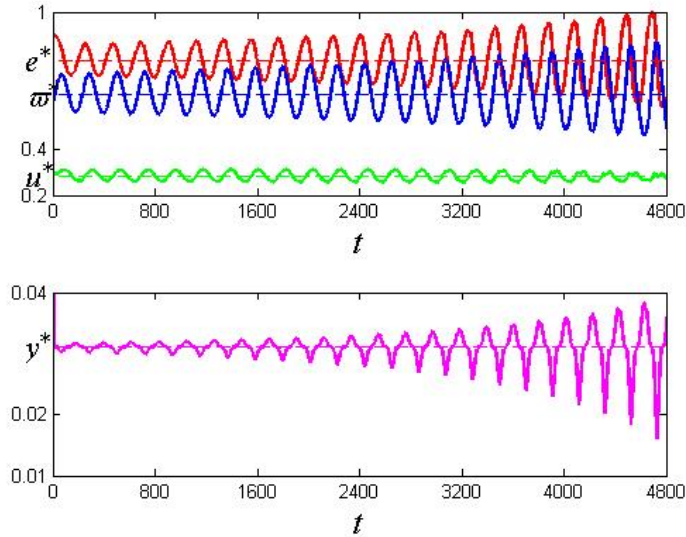


Figure 4: Time series 4D, “profit-led” case

As we can see, the periodic solution increases in magnitude while slowly converging to the limit cycle outside values with economic meaning. While this result has to be taken parsimoniously, it throws a question, at least for the set of parameters and functional forms used in numerical simulations, over the sustainability of the so called profit-led regime that is usually claimed for open economies.

Still, two observations have to be made. First, in general profit-led regimes are considered to be more likely in open economies because of price-competitiveness effects, while here we abstracted from any price considerations. Second, recall from the local stability analysis that for values of $F'(e^*) < a_{HB}$ the system actually exhibits convergence to equilibrium. Periodic solutions emerge as a result of an increase in the sensitivity of workers’ wage demands to the employment rate. What our numerical exercise indicates is that the profit led regime is unsustainable only once endogenous fluctuations emerge, that is, for highly combative workers.

A description of the dynamics follows. An increase in the employment rate increases the wage share and as consequence reduces capital accumulation and the rate of growth of output because the reduction in investment is higher than the increase in consumption. On the one hand, a reduction in capital accumulation creates upward pressure on the rate of capacity

utilisation which is expected to decrease the employment rate through Kaldor-Verdoorn. On the other hand, a reduction in the rate of growth of output creates downward pressure on capacity utilisation, which in turn is expected to increase employment. It seems that at the beginning, the first effect prevails and we have periodic fluctuations within an economically meaningful range. However, the second effect increases in magnitude as time goes by and the model converges to a limit cycle outside a range of values with economic meaning.

5 Conclusions

In the last fifty years Goodwin's distributive cycle model has been and continues to be used as a fruitful "system for doing macro-dynamics". We note, however, that most of the existing contributions have been based on a closed economy framework. In this paper we have offered a modeling structure that expands the original model to an open economy framework in a way that incorporates the Balance-of-Payments constraint on growth. We have done so allowing technical change to be endogenous to the cyclical dynamics of the system.

We developed a three dimensional dynamic system that includes, besides the employment rate and the wage-share of the original model, also the rate of effective capacity utilisation. We showed that without having to impose any special condition on the values of the parameters, a Hopf-Bifurcation analysis establishes the possibility of persistent and bounded cyclical paths providing insights to enable better understanding of the nature of real-world fluctuations.

Moreover, in order to obtain a model that is fully embedded in Goodwin's fundamental insight that trend and cycle are indissolubly fused, we build a four dimensional dynamic system where the rate of growth of output was allowed to deviate from the external constraint. In this second case, disequilibrium in the goods market was further explored introducing an independent investment function. The importance of our contribution resides in its provision of a base-line model to study distributive dynamics in open economies.

Some numerical simulations were performed based on the analytical models. We showed that indeed under plausible conditions, a stable limit cycle emerges. Furthermore, even though our model is not Kaleckian in nature, it is possible to obtain insights that address the wage-led vs profit-led growth regimes. Our last growth-cycle model questions the sustainability of the so called profit-led regime that is usually claimed for open economy models.

A Mathematical appendix

A.1 Proof of Proposition 1

To prove Proposition 1 we proceed in four steps. First, from equation (18) we have that $G(u) = y_{BP} - n$, where $G : \mathfrak{R} \rightarrow \mathfrak{R}$ is a function monotonically increasing in u . The inverse of $G(\cdot)$ is also monotonically increasing so that $u^* = G^{-1}(y_{BP} - n)$ is the unique equilibrium value of effective capacity utilisation.

Making use of equations (18) and (19) we obtain the rate of growth of real wages in terms of the external constrain, i.e. $F(e) = y_{BP} - n$, where $F : \mathfrak{R} \rightarrow \mathfrak{R}$ is monotonically increasing in e . Therefore, its inverse is also an increasing function and we obtain $e^* = F^{-1}(y_{BP} - n)$ as the unique equilibrium value of the rate of employment.

The equilibrium wage-share is defined as the value of the wage-share that brings effective capacity utilisation and the external constraint to equilibrium. Rearranging (20) it is easy to see that $\varpi = 1 - \frac{y_{BP}}{su}$. Substituting the equilibrium value of capacity utilisation in this last expression we arrive at $\varpi^* = 1 - \frac{y_{BP}}{sG^{-1}(y_{BP}-n)}$.

Finally, in order for equilibrium values to have an economic meaning, we have to impose $0 < G^{-1}(y_{BP} - n) < 1$, $0 < F^{-1}(y_{BP} - n) < 1$, and $y_{BP} < sG^{-1}(y_{BP} - n)$.

A.2 Local stability analysis for the 3D dynamic system and proof of Proposition 2

In this Appendix we first derive the characteristic equation of the dynamics system (15)-(17) and prove Proposition 2. To do this, we linearise the dynamic system around the internal equilibrium point so as to obtain:

$$\begin{bmatrix} \dot{e} \\ \dot{\varpi} \\ \dot{u} \end{bmatrix} = \underbrace{\begin{bmatrix} 0 & 0 & J_{13} \\ J_{21} & 0 & J_{23} \\ 0 & J_{32} & J_{33} \end{bmatrix}}_{J^*} \begin{bmatrix} e - e^* \\ \varpi - \varpi^* \\ u - u^* \end{bmatrix}$$

where the elements of the Jacobian matrix J^* are given by:

$$\begin{aligned} J_{11} &= \left. \frac{\partial f_1(e, \varpi, u)}{\partial e} \right|_{(e^*, \varpi^*, u^*)} = 0 \\ J_{12} &= \left. \frac{\partial f_1(e, \varpi, u)}{\partial \varpi} \right|_{(e^*, \varpi^*, u^*)} = 0 \\ J_{13} &= \left. \frac{\partial f_1(e, \varpi, u)}{\partial u} \right|_{(e^*, \varpi^*, u^*)} = -G'(u^*)e^* < 0 \\ J_{21} &= \left. \frac{\partial f_2(e, \varpi, u)}{\partial e} \right|_{(e^*, \varpi^*, u^*)} = F'(e^*)\varpi^* > 0 \\ J_{22} &= \left. \frac{\partial f_2(e, \varpi, u)}{\partial \varpi} \right|_{(e^*, \varpi^*, u^*)} = 0 \\ J_{23} &= \left. \frac{\partial f_2(e, \varpi, u)}{\partial u} \right|_{(e^*, \varpi^*, u^*)} = -G'(u^*)\varpi^* < 0 \end{aligned}$$

$$\begin{aligned}
J_{31} &= \left. \frac{\partial f_3(e, \varpi, u)}{\partial e} \right|_{(e^*, \varpi^*, u^*)} = 0 \\
J_{32} &= \left. \frac{\partial f_3(e, \varpi, u)}{\partial \varpi} \right|_{(e^*, \varpi^*, u^*)} = su^{*2} > 0 \\
J_{33} &= \left. \frac{\partial f_3(e, \varpi, u)}{\partial u} \right|_{(e^*, \varpi^*, u^*)} = -s(1 - \varpi^*)u^* < 0
\end{aligned}$$

so that the characteristic equation can be written as

$$\lambda^3 + b_1\lambda^2 + b_2\lambda + b_3 = 0$$

where the coefficients are given by:

$$b_1 = -\operatorname{tr} J^* = -J_{33} > 0 \quad (53)$$

$$b_2 = \begin{vmatrix} 0 & J_{23} \\ J_{32} & J_{33} \end{vmatrix} + \begin{vmatrix} 0 & J_{13} \\ 0 & J_{33} \end{vmatrix} + \begin{vmatrix} 0 & 0 \\ J_{21} & 0 \end{vmatrix} = -J_{23}J_{32} > 0 \quad (54)$$

$$b_3 = -\det J = -J_{13}J_{21}J_{32} > 0 \quad (55)$$

The necessary and sufficient condition for the local stability of (e^*, ϖ^*, u^*) is that all roots of the characteristic equation have negative real parts, which, from Routh–Hurwitz conditions, requires:

$$b_1 > 0, \quad b_2 > 0, \quad b_3 > 0 \quad \text{and} \quad b_1b_2 - b_3 > 0.$$

Given (53)-(55), the crucial condition for local stability becomes the last one. Through direct computation we find that:

$$\begin{aligned}
b_1b_2 - b_3 &= J_{33}J_{23}J_{32} + J_{13}J_{21}J_{32} \\
&= J_{32}(J_{33}J_{23} + J_{13}J_{21}) \\
&= J_{32}[s(1 - \varpi^*)u^*G'(u^*)\varpi^* - G'(u^*)e^*F'(e^*)\varpi^*] \\
&= J_{32}\varpi^*G'(u^*)[s(1 - \varpi^*)u^* - e^*F'(e^*)] > 0
\end{aligned} \quad (56)$$

a condition that is satisfied when:

$$F'(e^*) < \frac{s(1 - \varpi^*)u^*}{e^*} = \frac{y_{BP}}{F^{-1}(y_{BP} - n)}$$

A.3 Proof of Proposition 3

To prove Proposition 3 using the (existence part of) the Hopf Bifurcation Theorem and using $F'(e^*)$ as bifurcation parameter, we must first of all (HB1) show that the characteristic equation possesses a pair of complex conjugate eigenvalues $\theta[F'(e^*)] \pm i\omega[F'(e^*)]$ that become purely imaginary at the critical value $F'(e^*)_{HB}$ of the parameter – i.e., $\theta[F'(e^*)_{HB}] = 0$ – and no other eigenvalues with zero real part exists at $F'(e^*)_{HB}$ and then (HB2) check that the derivative of the real part of the complex eigenvalues with respect to the bifurcation parameter is different from zero at the critical value.

(HB1) Given that the conditions $b_1 > 0$, $b_2 > 0$ and b_3 are all satisfied, in order that the characteristic equation has one negative real root and a pair of complex roots with zero real part we must have:

$$b_1b_2 - b_3 = 0$$

a condition which, given the expression for $b_1 b_2 - b_3$ derived in (56), is satisfied for

$$F'(e^*)_{HB} = \frac{s(1 - \varpi^*)u^*}{e^*}$$

(HB2) By using the so-called sensitivity analysis, it is then possible to show that the second requirement of the Hopf Bifurcation Theorem is also met. Substituting the elements of the Jacobian matrix into the respective coefficients of the characteristic equation:

$$\begin{aligned} b_1 &= s(1 - \varpi^*)u^* \\ b_2 &= sG'(u^*)\varpi^*u^{*2} \\ b_3 &= sG'(u^*)F'(e^*)e^*\varpi^*u^{*2} \end{aligned}$$

so that

$$\begin{aligned} \frac{\partial b_1}{\partial F'(e^*)} &= 0 \\ \frac{\partial b_2}{\partial F'(e^*)} &= 0 \\ \frac{\partial b_3}{\partial F'(e^*)} &= sG'(u^*)e^*\varpi^*u^{*2} > 0 \end{aligned}$$

When $F'(e^*)_{HB} = s(1 - \varpi^*)u^*/e^*$, apart from $b_1 > 0$, $b_2 > 0$ and $b_3 > 0$ which is always true, one also has $b_1 b_2 - b_3 = 0$. In this case, one root of the characteristic equation is real negative (λ_1), whereas the other two are a pair of complex roots with zero real part ($\lambda_{2,3} = \theta \pm i\omega$, with $\theta = 0$). We thus have:

$$\begin{aligned} b_1 &= -(\lambda_1 + \lambda_2 + \lambda_3) \\ &= -(\lambda_1 + 2\theta) \\ b_2 &= \lambda_1\lambda_2 + \lambda_1\lambda_3 + \lambda_2\lambda_3 \\ &= 2\lambda_1\theta + \theta^2 + \omega^2 \\ b_3 &= -\lambda_1\lambda_2\lambda_3 \\ &= -\lambda_1(\theta^2 + \omega^2) \end{aligned}$$

such that:

$$\begin{aligned} \frac{\partial b_1}{\partial F'(e^*)} &= -\frac{\partial \lambda_1}{\partial F'(e^*)} - 2\frac{\partial \theta}{\partial F'(e^*)} = 0 \\ \frac{\partial b_2}{\partial F'(e^*)} &= 2\theta\frac{\partial \lambda_1}{\partial F'(e^*)} + 2(\lambda_1 + \theta)\frac{\partial \theta}{\partial F'(e^*)} + 2\omega\frac{\partial \omega}{\partial F'(e^*)} = 0 \\ \frac{\partial b_3}{\partial F'(e^*)} &= -(\theta^2 + \omega^2)\frac{\partial \lambda_1}{\partial F'(e^*)} - 2\lambda_1\theta\frac{\partial \theta}{\partial F'(e^*)} - 2\lambda_1\omega\frac{\partial \omega}{\partial F'(e^*)} \\ &= sG'(u^*)e^*\varpi^*u^{*2} \end{aligned}$$

For $\theta = 0$, the system to be solved becomes:

$$\begin{aligned} -\frac{\partial \lambda_1}{\partial F'(e^*)} - 2\frac{\partial \theta}{\partial F'(e^*)} &= 0 \\ 2\lambda_1\frac{\partial \theta}{\partial F'(e^*)} + 2\omega\frac{\partial \omega}{\partial F'(e^*)} &= 0 \\ -\omega^2\frac{\partial \lambda_1}{\partial F'(e^*)} - 2\lambda_1\omega\frac{\partial \omega}{\partial F'(e^*)} &= G'(u^*)e^*\varpi^*u^{*2} \end{aligned}$$

or

$$\begin{bmatrix} -1 & -2 & 0 \\ 0 & 2\lambda_1 & 2\omega \\ -\omega^2 & 0 & -2\lambda_1\omega \end{bmatrix} \begin{bmatrix} \frac{\partial \lambda_1}{\partial F'(e^*)} \\ \frac{\partial \theta}{\partial F'(e^*)} \\ \frac{\partial \omega}{\partial F'(e^*)} \end{bmatrix} = \begin{bmatrix} 0 \\ 0 \\ sG'(u^*)e^*\varpi^*u^{*2} \end{bmatrix}$$

Thus:

$$\begin{aligned} \frac{\partial \theta}{\partial F'(e^*)} \Big|_{F'(e^*)=F'(e^*)_{HB}} &= \frac{\begin{vmatrix} -1 & 0 & 0 \\ 0 & 0 & 2\omega \\ -\omega^2 & sG'(u^*)e^*\varpi^*u^{*2} & -2\lambda_1\omega \end{vmatrix}}{\begin{vmatrix} -1 & -2 & 0 \\ 0 & 2\lambda_1 & 2\omega \\ -\omega^2 & 0 & -2\lambda_1\omega \end{vmatrix}} \\ &= \frac{2\omega sG'(u^*)e^*\varpi^*u^{*2}}{4\omega(\lambda_1^2 + \omega^2)} > 0 \end{aligned}$$

A.4 Proof of Proposition 4

The demonstration of Proposition 4 follows very closely the steps of Proposition 1. Nevertheless, the first variable to adjust is output. In equilibrium, equation (42) states that $D(y_{BP}, e^*, \varpi^*, u^*) = 0$, where $D(\cdot)$ is monotonically decreasing in y . It follows by construction that $y = y_{BP}$, $e = e^*$, $\varpi = \varpi^*$ and $u = u^*$ with the employment rate, the wage share and capacity utilisation still to be determined. Once output converges to the BoPC growth rate we have from (39) that $G(u) = y_{BP} - n$, where $G : \mathfrak{R} \rightarrow \mathfrak{R}$ is a function monotonically increasing in u . The inverse of $G(\cdot)$ is also monotonically increasing so that $u^* = G^{-1}(y_{BP} - n)$ is the unique equilibrium value of effective capacity utilisation.

Making use of equations (39) and (40) we obtain the rate of growth of real wages in terms of Thirlwall's law, i.e. $F(e) = y_{BP} - n$, where $F : \mathfrak{R} \rightarrow \mathfrak{R}$ is monotonically increasing in e . Therefore, its inverse is also an increasing function and we obtain $e^* = F^{-1}(y_{BP} - n)$ as the unique equilibrium value of the rate of employment.

The equilibrium wage-share is defined as the value of the wage-share that brings effective capacity utilisation and the balance-of-payments to equilibrium. The novelty here is the independent investment function $H : \mathfrak{R} \rightarrow \mathfrak{R}$, monotonically increasing in u and decreasing in ϖ . Making use of the equilibrium value of capacity utilisation and equation (42) we have that $H[\varpi; G^{-1}(y_{BP} - n)] = y_{BP}$. It follows that the unique equilibrium for the wage-share is determined and defined by $\varpi^* = H^{-1}[y_{BP}; \varpi; G^{-1}(y_{BP} - n)]$.

Finally, in order to obtain equilibrium values with economic meaning we have to impose $0 < G^{-1}(y_{BP} - n) < 1$, $0 < F^{-1}(y_{BP} - n) < 1$ and $0 < H^{-1}[y_{BP}; \varpi; G^{-1}(y_{BP} - n)] < 1$.

A.5 Local stability analysis for the dynamic system (35)-(38) and proof of Proposition 5

In this Appendix we first derive the characteristic equation of the dynamic system (35)-(38) and prove Proposition 5. To do this, we first linearise the dynamic system around the internal

equilibrium point so as to obtain:

$$\begin{bmatrix} \dot{e} \\ \dot{\varpi} \\ \dot{u} \\ \dot{y} \end{bmatrix} = \underbrace{\begin{bmatrix} 0 & 0 & J_{13} & J_{14} \\ J_{21} & 0 & J_{23} & 0 \\ 0 & J_{32} & J_{33} & J_{34} \\ 0 & 0 & 0 & J_{44} \end{bmatrix}}_{J^*} \begin{bmatrix} e - e^* \\ \varpi - \varpi^* \\ u - u^* \\ y - y^* \end{bmatrix}$$

where the elements of the Jacobian matrix J^* are given by:

$$\begin{aligned} J_{11} &= \left. \frac{\partial g_1(e, \varpi, u, y)}{\partial e} \right|_{(e^*, \varpi^*, u^*, y^*)} = 0 \\ J_{12} &= \left. \frac{\partial g_1(e, \varpi, u, y)}{\partial \varpi} \right|_{(e^*, \varpi^*, u^*, y^*)} = 0 \\ J_{13} &= \left. \frac{\partial g_1(e, \varpi, u, y)}{\partial u} \right|_{(e^*, \varpi^*, u^*, y^*)} = -G'(u^*)e^* < 0 \\ J_{14} &= \left. \frac{\partial g_1(e, \varpi, u, y)}{\partial y} \right|_{(e^*, \varpi^*, u^*, y^*)} = e^* \\ J_{21} &= \left. \frac{\partial g_2(e, \varpi, u, y)}{\partial e} \right|_{(e^*, \varpi^*, u^*, y^*)} = F'(e^*)\varpi^* > 0 \\ J_{22} &= \left. \frac{\partial g_2(e, \varpi, u, y)}{\partial \varpi} \right|_{(e^*, \varpi^*, u^*, y^*)} = 0 \\ J_{23} &= \left. \frac{\partial g_2(e, \varpi, u, y)}{\partial u} \right|_{(e^*, \varpi^*, u^*, y^*)} = -G'(u^*)\varpi^* < 0 \\ J_{24} &= \left. \frac{\partial g_2(e, \varpi, u, y)}{\partial y} \right|_{(e^*, \varpi^*, u^*, y^*)} = 0 \\ J_{31} &= \left. \frac{\partial g_3(e, \varpi, u, y)}{\partial e} \right|_{(e^*, \varpi^*, u^*, y^*)} = 0 \\ J_{32} &= \left. \frac{\partial g_3(e, \varpi, u, y)}{\partial \varpi} \right|_{(e^*, \varpi^*, u^*, y^*)} = -H_{\varpi}(\varpi^*; u^*)u^* > 0 \\ J_{33} &= \left. \frac{\partial g_3(e, \varpi, u, y)}{\partial u} \right|_{(e^*, \varpi^*, u^*, y^*)} = -H_u(\varpi^*; u^*)u^* < 0 \\ J_{34} &= \left. \frac{\partial g_3(e, \varpi, u, y)}{\partial y} \right|_{(e^*, \varpi^*, u^*, y^*)} = u^* > 0 \\ J_{41} &= \left. \frac{\partial g_4(e, \varpi, u, y)}{\partial e} \right|_{(e^*, \varpi^*, u^*, y^*)} = 0 \\ J_{42} &= \left. \frac{\partial g_4(e, \varpi, u, y)}{\partial \varpi} \right|_{(e^*, \varpi^*, u^*, y^*)} = 0 \\ J_{43} &= \left. \frac{\partial g_4(e, \varpi, u, y)}{\partial u} \right|_{(e^*, \varpi^*, u^*, y^*)} = 0 \\ J_{44} &= \left. \frac{\partial g_4(e, \varpi, u, y)}{\partial y} \right|_{(e^*, \varpi^*, u^*, y^*)} = -D_y < 0 \end{aligned}$$

Thus, the characteristic equation for the linearised system is:

$$\lambda^4 + b_1\lambda^3 + b_2\lambda^2 + b_3\lambda + b_4 = 0$$

where the coefficients are given by:

$$b_1 = -\operatorname{tr} J^* = -J_{33} - J_{44} > 0 \quad (57)$$

$$\begin{aligned} b_2 &= \begin{vmatrix} J_{33} & J_{34} \\ 0 & J_{44} \end{vmatrix} + \begin{vmatrix} 0 & 0 \\ 0 & J_{44} \end{vmatrix} + \begin{vmatrix} 0 & J_{23} \\ J_{32} & J_{33} \end{vmatrix} \\ &+ \begin{vmatrix} 0 & J_{14} \\ 0 & J_{44} \end{vmatrix} + \begin{vmatrix} 0 & J_{13} \\ 0 & J_{33} \end{vmatrix} + \begin{vmatrix} 0 & 0 \\ J_{21} & 0 \end{vmatrix} \\ &= J_{33}J_{44} - J_{23}J_{32} > 0 \end{aligned} \quad (58)$$

$$\begin{aligned} b_3 &= - \begin{vmatrix} 0 & J_{23} & 0 \\ J_{32} & J_{33} & J_{34} \\ 0 & 0 & J_{44} \end{vmatrix} - \begin{vmatrix} 0 & J_{13} & J_{14} \\ 0 & J_{33} & J_{34} \\ 0 & 0 & J_{44} \end{vmatrix} \\ &- \begin{vmatrix} 0 & 0 & J_{14} \\ J_{21} & 0 & 0 \\ 0 & 0 & J_{44} \end{vmatrix} - \begin{vmatrix} 0 & 0 & J_{13} \\ J_{21} & 0 & J_{23} \\ 0 & J_{32} & J_{33} \end{vmatrix} \\ &= J_{23}J_{32}J_{44} - J_{13}J_{21}J_{32} > 0 \end{aligned} \quad (59)$$

$$b_4 = \det J = -J_{21}J_{13}J_{32}J_{44} > 0 \quad (60)$$

The necessary and sufficient condition for the local stability of (e^*, ϖ^*, u^*) is that all roots of the characteristic equation have negative real parts, which, from Routh–Hurwitz conditions, requires:

$$b_1 > 0, b_2 > 0, b_3 > 0, b_4 > 0 \text{ and } b_1b_2b_3 - b_1^2b_4 - b_3^2 > 0.$$

Given (57)-(60), the crucial requirement for local stability becomes the last one. Through direct computation we find that:

$$\begin{aligned} b_1b_2b_3 - b_1^2b_4 - b_3^2 &= -(J_{33} + J_{44})(J_{33}J_{44} - J_{23}J_{32})(J_{23}J_{32}J_{44} - J_{13}J_{21}J_{32}) \\ &- (J_{33} + J_{44})^2J_{21}J_{13}J_{32}J_{44} - (J_{23}J_{32}J_{44} - J_{13}J_{21}J_{32})^2 \\ &= \underbrace{-J_{32}(J_{13}J_{21} + J_{23}J_{33})}_{<0} \underbrace{(J_{33}J_{44}^2 + J_{44}^3 + J_{13}J_{32}J_{21} - J_{23}J_{32}J_{44})}_{<0} \end{aligned}$$

Therefore, the last Routh–Hurwitz condition is satisfied when:

$$J_{13}J_{21} + J_{23}J_{33} > 0$$

Substituting the respective values of the Jacobian matrix:

$$\begin{aligned} &= -G'(u^*)e^*F'(e^*)\varpi^* + G'(u^*)\varpi^*H_u(\varpi^*; u^*)u^* \\ &= -G'(u^*)\varpi^*[e^*F'(e^*) - H_u(\varpi^*; u^*)u^*] > 0 \end{aligned}$$

a condition which is satisfied when:

$$F'(e^*) < \frac{H_u(\varpi^*; u^*)u^*}{e^*} = \frac{H_u(\varpi^*; u^*)G^{-1}(y_{BP} - n)}{F^{-1}(y_{BP} - n)}$$

A.6 Proof of Proposition 6

To prove this proposition (see Asada and Yoshida, 2003), we must show that there exists a value of $F'(e^*) = F'(e^*)_{HB}$ such that we have (HB1) $b_1[F'(e^*)_{HB}], b_2[F'(e^*)_{HB}], b_3[F'(e^*)_{HB}], b_4[F'(e^*)_{HB}] > 0$ and (HB2) $\Phi[F'(e^*)_{HB}] = b_1[F'(e^*)_{HB}]b_2[F'(e^*)_{HB}]b_3[F'(e^*)_{HB}] - b_1[F'(e^*)_{HB}]^2b_4[F'(e^*)_{HB}] - b_3^2[F'(e^*)_{HB}] = 0$ with $\frac{d\Phi}{dF'(e^*)}\Big|_{F'(e^*)=F'(e^*)_{HB}} \neq 0$.

(HB1) Given the expressions for b_1, b_2, b_3 and b_4 in (57)-(60) the first part of the demonstration is immediately satisfied.

(HB2) Through direct computation we obtain:

$$\begin{aligned} b_1b_2b_3 - b_1^2b_4 - b_3^2 &= -(J_{33} + J_{44})(J_{33}J_{44} - J_{23}J_{32})(J_{23}J_{32}J_{44} - J_{13}J_{21}J_{32}) \\ &\quad - (J_{33} + J_{44})^2J_{21}J_{13}J_{32}J_{44} - (J_{23}J_{32}J_{44} - J_{13}J_{21}J_{32})^2 \\ &= \underbrace{-J_{32}(J_{31}J_{12} + J_{23}J_{33})}_{<0} \underbrace{(J_{33}J_{44}^2 + J_{44}^3 + J_{13}J_{32}J_{21} - J_{23}J_{32}J_{44})}_{<0} \end{aligned}$$

Taking $J_{31}J_{12} + J_{23}J_{33}$ and substituting the respective values of the Jacobian matrix, it is certainly possible to find a $F'(e^*)$ sufficiently greater than $\frac{H_u(\varpi^*; u^*)u^*}{e^*}$ such that:

$$\begin{aligned} &J_{31}J_{12} + J_{23}J_{33} \\ &= -G'(u^*)e^*F'(e^*)\varpi^* + G'(u^*)\varpi^*H_u(\varpi^*; u^*)u^* \\ &= -G'(u^*)\varpi^*[e^*F'(e^*) - H_u(\varpi^*; u^*)u^*] < 0 \end{aligned}$$

and therefore $b_1b_2b_3 - b_1^2b_4 - b_3^2 < 0$. By continuity, this means that there exists at least one value of the parameter $F'(e^*) = \frac{H_u(\varpi^*; u^*)u^*}{e^*}$ such that $\Phi = 0$ with $\frac{d\Phi}{dF'(e^*)}\Big|_{F'(e^*)=F'(e^*)_{HB}} \neq 0$.

B Econometric appendix

Thirlwall's law states that $y_{BP} = \rho \frac{\dot{Z}}{Z}$ where $\rho = \frac{dX}{dZ} \frac{Z}{X} / \frac{dM}{dY} \frac{Y}{M}$. Notice, however, that $\left(\frac{dX}{dZ} \frac{Z}{X}\right) \frac{\dot{Z}}{Z}$ is nothing other than the growth rate of exports, $\frac{\dot{X}}{X}$. Therefore, we can rewrite the rule as $y_{BP} = \frac{\dot{X}/X}{\frac{dM}{dY} \frac{Y}{M}}$, that is, as the ratio between the growth rate of exports and the income elasticity of imports. Assuming that $M(\cdot)$ is an homogenous function of degree π , we have:

$$y_{BP} = \frac{\dot{X}/X}{\pi}$$

where π stands for the income elasticity of imports.

The empirical relevance of the BoPC model is usually investigated by relying on this last simple expression. This crucially depends on the estimate of the income elasticity of imports which can be obtained from a standard aggregate import function. To this end, in this paper we use country-specific cointegrating techniques.¹⁴ We make use of the Auto-Regressive Distributed Lag (ARDL) bounds, testing the cointegration procedure developed by Pesaran and Shin (1998) and latter extended by Pesaran, Shin and Smith (2001) to estimate Thirlwall's law for each individual country. This methodology has several advantages over other cointegration methods as it allows the analysis to be undertaken regardless of whether the variables are a mixture of stationary [I(0)] and integrated of order one [I(1)], which is potentially our case.

To the best of our knowledge Lanzafame (2014) is the only other author to have used a similar technique when estimating the law. However, he imposes a common lag structure to all countries and does not apply the Bounds cointegration test. Actually, he considers that the significant negative error-correction coefficients provide enough support for the hypothesis that the variables share a long-run relation. The novelty of our exercise is in (i) allowing different lags for each country and (ii) applying the Bounds/ARDL cointegration test.

Our dataset is annual and covers the period between 1960 and 2016 for 17 OECD countries (Australia, Austria, Belgium, Canada, Denmark, Finland, France, Germany, Ireland, Netherlands, New Zealand, Norway, Portugal, Sweden, Switzerland, United Kingdom, and United States) with some variability according to data availability. We use Gross Domestic Product (GDP), exports and imports at constant 2010 US\$ from the World Development Indicators (WDI). The real effective exchange rate (REER) was obtained from the Bruegel Project when not accessible directly from the WDI.

Table A1 reports each ARDL estimation and the Bounds test for cointegration under the null hypothesis of no cointegration.¹⁵ All models estimated included dummy variables to capture the structural break effects. One dummy variable was assigned for each indicator for

¹⁴This approach overcomes two of the main shortcomings of the usual cross-country regressions. First, by focusing exclusively on the time dimension of data it avoids a number of heterogeneity problems. Second, the omitted variable issue is less likely to affect the reliability of our estimates. This is because an omitted variable will either be stationary - in which case the estimated coefficients are invariant to its inclusion - or it will be non-stationary - in which case we will not be able to obtain a stable cointegrating relationship if we leave it out. For a further discussion and references on the econometric properties of the time-series approach see Gobbin and Rayp (2008).

¹⁵In order to confirm that all series are at most integrated of order one we perform for each country two different group unit root tests. The first one is the Levin, Lin and Chu (LLC) test that assumes a common unit root process. The second one is the Im, Pesaran and Shin (IPS) test that assumes an individual unit root process. We also performed the Bai-Perron test for multiple sequential break-points. Results of the unit root and Bai-Perron tests are available on request.

each country. They assume a value of 1 for years with breaks and 0 for years with no break. We can see that in all cases with the exception of the United Kingdom series cointegrate. Moreover, the significance and negative signal of the coefficient of the lagged error-correction term indicates that the system is stable and there is Granger causality running from the explanatory variables to imports.

Country	Model	Bounds/Coint.	EC
Australia	ARDL(1,1,2)	**	-/**
Austria	ARDL(1,4,4)	***	-/**
Belgium	ARDL(1,0,0)	***	-/**
Canada	ARDL(1,0,0)	***	-/**
Denmark	ARDL(1,0,0)	***	-/**
Finland	ARDL(1,0,0)	***	-/**
France	ARDL(1,0,0)	***	-/**
Germany	ARDL(1,0,0)	***	-/**
Ireland	ARDL(2,0,0)	***	-/**
Netherlands	ARDL(1,0,0)	***	-/**
New Zealand	ARDL(1,0,0)	***	-/**
Norway	ARDL(1,0,0)	***	-/**
Portugal	ARDL(1,0,0)	**	-/**
Sweden	ARDL(6,9,10)	***	-/**
Switzerland	ARDL(1,0,0)	***	-/**
UK	ARDL(1,1,0)		
US	ARDL(1,1,0)	***	-/**

Table A1: ARDL and Bounds test. *, **, *** stand for 10%, 5% and 1% of significance

Long-run coefficients are reported in table A2:

Country	C	ln GDP	ln REER
Australia	-28.89172***	1.938834***	0.205465
Austria	-24.14632***	2.014088***	-0.794064***
Belgium	-17.12713	1.634609***	-0.015309
Canada	-19.93800***	1.646217***	0.148537
Denmark	-31.35056***	2.300086***	-0.857417
Finland	-11.09356***	1.560602***	-0.0996308**
France	-26.85979***	1.855581***	0.261043
Germany	-37.29493***	2.341404***	-0.485288
Ireland	-16.84760***	1.643780***	-0.018189
Netherlands	-20.13538***	1.956193***	-1.412166***
New Zealand	-24.35072***	1.851500***	0.275679
Norway	2.645805	1.110661***	-1.457865
Portugal	-7.635766	1.658072**	-2.278364
Sweden	-37.34596***	2.231836***	0.695648**
Switzerland	-29.62199***	2.044630***	0.163915
UK	-30.64547***	2.026361***	0.039008
US	-37.89596***	2.137113***	0.313885

Table A2: Long-run coefficients. *, **, and *** are 10%, 5% and 1% of significance.

As expected from theory, the income elasticity of imports is positive and significant in all cases. An increase of 1% in GDP is associated with an increase of between 1.1% – 2.3% in

imports. On the other hand, the REER, which measures the development of the real value of a country's currency against the basket of its trading partners' currencies, was statistically non-significant in most of the cases giving support to the hypothesis that the balance-of-payments adjustment occurs through income instead of prices. To assess a valid inference and no spurious regressions, residuals of all ARLD estimations were checked for serial correlation using the Bresch-Godfrey LM test. We concluded that our estimates were consistent. Results are available on request.

The coefficient of $\ln GDP$ corresponds to the estimated income elasticity of imports ($\hat{\pi}$) of each country. Taking the average growth rate of exports and dividing by $\hat{\pi}$ we obtain the long-run BoPC growth rate. Table A3 presents our estimates:

Country	Actual growth	BoPC growth	delta	delta/actual growth
Australia	3.488844673	2.864993	0.623852	0.178813
Austria	2.751033634	2.808055	-0.05702	0.020756
Belgium	2.643991373	3.109916	-0.46592	0.176218
Canada	3.199715	3.075819	0.123896	0.038720
Denmark	2.32909	2.166420	0.16267	0.069842
Finland	2.829946	3.406702	-0.57676	0.203806
France	2.791525	3.049623	-0.2581	0.092458
Germany	1.990479	1.896716	0.093763	0.047105
Ireland	4.929054	5.628571	-0.69952	0.141917
Netherlands	2.83579	2.885580	-0.04979	0.017557
New Zealand	2.473258	2.186086	0.287172	0.116110
Norway	3.160926	3.761338	-0.60041	0.189947
Portugal	3.243022	3.581068	-0.33805	0.104239
Sweden	2.578775	2.345635	0.23314	0.090407
Switzerland	1.721889	1.973946	-0.25206	0.146385
UK	2.412672	2.225886	0.186786	0.077418
US	2.79901	2.666027	0.132983	0.047510

Table A3: Actual vs estimated growth rates

Our estimates of Thirlwall's law provide a fair approximation of actual average long-run growth rates for countries of the sample with an average error (delta/actual growth) of 10%.

References

- [1] Araújo, R., Moreira, H., Dávila-Fernández, M.J. (2017). Testing an extended version of Goodwin's growth-cycle model to the US economy. Presented on the Workshop on Economic Growth and Income Distribution (Ilheus, Brazil). Manuscript submitted for publication.
- [2] Asada, T., Chiarella, C., Flaschel, P., Franke, R. (2003). *Open Economy Macrodynamics. An Integrated Disequilibrium Approach*. Berlin: Springer Verlag.
- [3] Asada, T., Yoshida, H. (2003). Coefficient criterion for four-dimensional Hopf bifurcations: A complete mathematical characterization and applications to economic dynamics. *Chaos, Solitons and Fractals* 18, 525-536.
- [4] Bhaduri, A., Marglin, S. (1990). Unemployment and the real wage: The economic basis for contesting political ideologies. *Cambridge Journal of Economics* 14(4), 375-393.
- [5] Blecker, R. (1989). International competition, income distribution and economic growth. *Cambridge Journal of Economics* 13(3), 395-412.
- [6] Blecker, R. (2016). Wage-led versus profit-led demand regimes: the long and the short of it. *Review of Keynesian Economics* 4(4), 373-390.
- [7] Chiarella, C., Flaschel, P., Franke, R. (2005). *Foundations for a Disequilibrium Theory of the Business Cycle: Qualitative Analysis and Quantitative Assessment*. Cambridge: Cambridge University Press.
- [8] Dávila-Fernández, M.J., Oreiro, J.L., Dávila, M.W. (2017). Endogenizing non-price competitiveness in a model with capital accumulation and BoPC on growth. Presented on the 14th International Conference Developments in Economic Theory and Policy (Bilbao, Spain). Manuscript submitted for publication.
- [9] Dutt, A. (2006). Aggregate demand, aggregate supply and economic growth. *International Review of Applied Economics* 20(3), 319-336.
- [10] Felipe, J., McCombie, J. (2013). *The Aggregate Production Function and the Measurement of Technical Change: Not Even Wrong*. Cheltenham: Edward Elgar.
- [11] Flaschel, P. (2015). Goodwin's MKS system: a baseline macro model. *Cambridge Journal of Economics* 39(6), 1591-1605.
- [12] Gabriel, L.F., Jayme, F., Jr., Oreiro, J.L. (2016). A North-South model of economic growth, technological gap, structural change and real exchange rate. *Structural Change and Economic Dynamics* 38, 83-94.
- [13] Gandolfo, G., (2009). *Economic Dynamics*, Fourth Edition. Berlin: Springer Verlag.
- [14] Garcimartin, C., Kvedaras, V., Rivas, L. (2016). Business cycles in a balance-of-payments constrained growth framework. *Economic Modelling* 57, 120-132.
- [15] Gobbin, N., Rayp, G. (2008). Different ways of looking at old issues: a time-series approach to inequality and growth. *Applied Economics*, 40(7): 885-895.

- [16] Goodwin, R.M. (1948). Secular and cyclical aspects of the multiplier and the accelerator, in L. Metzler (ed.), *Income, Employment and Public Policy: Essays in Honor of Alvin H. Hansen*, pp. 108-132. New York: Norton & Company.
- [17] Goodwin, R.M. (1950). A non-linear theory of the cycle. *Review of Economics and Statistics* 32(4), 316-320.
- [18] Goodwin, R.M. (1951). The nonlinear accelerator and the persistence of business cycles. *Econometrica* 19(1), 1-16.
- [19] Goodwin, R.M. (1967). A growth cycle, in C.H. Feinstein (ed.), *Socialism, Capitalism and Economic Growth*, pp. 54-58. Cambridge: Cambridge University Press.
- [20] Gouvea, R., Lima, G. (2010). Structural Change, balance-of-payments constraint, and economic growth: evidence from the multisectoral Thirlwall's law. *Journal of Post Keynesian Economics* 33(1), 169-204.
- [21] Gouvea, R., Lima, G. (2013). Balance of payments constrained growth in a multisectoral framework: a panel data investigation. *Journal of Economic Studies* 40(2), 240-254.
- [22] Hausmann, R., Hidalgo, C., Bustos, S., Coscia, M., Simoes, A. (2014). *The Atlas of Economic Complexity: Mapping Paths to Prosperity*. Cambridge, Mass.: MIT Press.
- [23] Hein, E., Tarassow, A. (2010). Distribution, aggregate demand and productivity growth: theory and empirical results for six OECD countries based on a post-Kaleckian model, *Cambridge Journal of Economics* 34(4), 727-754.
- [24] Hidalgo, C., Klinger, B., Barabási, A. and Hausmann, R. (2007). The product space conditions the development of nations. *Science* 317, 482-487.
- [25] Kaldor, N. (1957). A model of economic growth. *Economic Journal*, 67(268): 591-624.
- [26] Kaldor, N. (1961). Capital accumulation and economic growth, in F. Lutz and D.C. Hague (eds.), *The Theory of Capital*, pp. 177-222. London: Macmillan.
- [27] Kaldor, N. (1966). *The Causes of the Slow Rate of Economic Growth of the United Kingdom: An Inaugural Lecture*. Cambridge: Cambridge University Press.
- [28] Kaldor, N. (1970). The case for regional policies. *Scottish Journal of Political Economy*, 17(3): 337-48.
- [29] Kalecki, M. (1968). Trend and Business Cycles Reconsidered. *Economic Journal*, 78(310):263-276.
- [30] Keen, S. (2013). A monetary Minsky model of the Great Moderation and the Great Recession. *Journal of Economic Behavior and Organization* 86, 221-235.
- [31] Lanzafame, M. (2014). The balance of payments-constrained growth rate and the natural rate of growth: new empirical evidence. *Cambridge Journal of Economics* 38(4), 817-838.
- [32] León-Ledesma, M., Thirlwall, A. (2002). The endogeneity of the natural rate of growth. *Cambridge Journal of Economics* 26(4), 441-459.

- [33] León-Ledesma, M., Lanzafame, M. (2010). The endogenous nature of the natural rate of growth, in *Handbook of Alternative Theories of Economic Growth*, pp. 208-219. Cheltenham: Edward Elgar.
- [34] Libânio, G. (2009). Aggregate demand and the endogeneity of the natural rate of growth: evidence from Latin American economies. *Cambridge Journal of Economics* 33(5), 967-984.
- [35] Martins Neto, A., Porcile, G. (2017). Destabilizing austerity: Fiscal policy in a BOP-dominated macrodynamics. *Structural Change and Economic Dynamics* 43, 39-50.
- [36] McCombie, J., Spreafico, M. (2016). Kaldor's technical progress function and Verdoorn's law revisited. *Cambridge Journal of Economics* 40(4), 1117-1136.
- [37] Naastepad, C.W. (2006). Technology, demand and distribution: a cumulative growth model with an application to the Dutch productivity growth slowdown. *Cambridge Journal of Economics* 30(3), 403-434.
- [38] Nikiforos, M. (2013). The (normal) rate of capacity utilization at the firm level. *Metroeconomica* 64(3), :513-138.
- [39] Nikiforos, M. (2016). On the utilization controversy: a theoretical and empirical discussion of the Kaleckian model of growth and distribution. *Cambridge Journal of Economics* 40(2), 437-467.
- [40] Onaran, Ö., Galanis, G. (2014). Income distribution and growth: a global model. *Environment and Planning A* 46(10), 2489-2513.
- [41] Onaran, Ö., Galanis, G. (2016). Wage-led growth in the EU15 member-states: the effects of income distribution on growth, investment, trade balance and inflation. *Cambridge Journal of Economics* 40(6), 1517-1551.
- [42] Pesaran, M., Shin, Y. (1998). An autoregressive distributed-lag modelling approach to cointegration analysis. *Econometric Society Monographs*, 31:371-413.
- [43] Pesaran, M., Shin, Y. and Smith, R. (2001). Bounds testing approaches to the analysis of level relationships. *Journal of Applied Econometrics*. 16(3): 289-326.
- [44] Petri, F. (2004). *General Equilibrium, Capital and Macroeconomics: A Key to Recent Controversies in Equilibrium Theory*. Cheltenham: Edward Elgar.
- [45] Prebisch, R. (1959). Commercial Policy in the Underdeveloped Countries. *American Economic Review* 49(2), 251-273.
- [46] Razmi, A. (2016). Correctly analysing the balance-of-payments constraint on growth. *Cambridge Journal of Economics* 40(6), 1581-1608.
- [47] Rezai, A. (2012). Goodwin Cycles, Distributional Conflict and Productivity Growth. *Metroeconomica* 63(1), 29-39.
- [48] Romero, J., McCombie, J. (2016). The Multi-Sectoral Thirlwall's Law: evidence from 14 developed European countries using product-level panel data. *International Review of Applied Economics*, 30(3): 301-325.

- [49] Sasaki, H. (2013). Cyclical growth in a Goodwin–Kalecki–Marx model. *Journal of Economics* 108 (3), 145-171.
- [50] Sasaki, H., Sonoda, R., Fujita, S. (2013). International Competition and Distributive Class Conflict in an Open Economy Kaleckian Model. *Metroeconomica* 64(4), 683-715.
- [51] Setterfield, M. (2006). Thirlwall’s law and Palley’s pitfalls: a reconsideration. In P. Arestis, J. McCombie and R. Vickerman (eds.), *Growth and Economic Development: Essay’s in Honour of A.P. Thirlwall*. Cheltenham: Edward Elgar.
- [52] Soukiazis, E., Cerqueira, P., Antunes, M. (2012). Modelling economic growth with internal and external imbalances: empirical evidence from Portugal. *Economic Modelling* 29, 478-486.
- [53] Soukiazis, E., Cerqueira, P., Antunes, M. (2014). Explaining Italy’s economic growth: A balance-of-payments approach with internal and external imbalances and non-neutral relative prices. *Economic Modelling* 40, 334-341.
- [54] Skott, P. (1989). *Conflict and Effective Demand in Economic Growth*. Cambridge: Cambridge University Press.
- [55] Skott, P. (2012). Theoretical and empirical shortcomings of the Kaleckian investment function. *Metroeconomica* 63(1), 109-138.
- [56] Sordi, S., Vercelli, A. (2012). Heterogeneous expectations and strong uncertainty in a Minskyan model of financial fluctuations. *Journal of Economic Behavior and Organization* 83, 544-557.
- [57] Sordi, S., Vercelli, A. (2014). Unemployment, income distribution and debt-financed investment in a growth cycle model. *Journal of Economic Dynamics and Control* 48, 325-348.
- [58] Stockhammer, E., Onaran, Ö., Ederer, S. (2009). Functional income distribution and aggregate demand in the Euro area. *Cambridge Journal of Economics* 33(1), 139-159.
- [59] Tavani, D., Zamparelli, L. (2017). Endogenous Technical Change in Alternative Theories of Growth and Income Distribution. *Journal of Economic Surveys*.
- [60] Thirlwall, A.P. (1979). The balance of payments constraint as an explanation of international growth rate differences. *Banca Nazionale del Lavoro Quarterly Review* 32(128), 45-53.
- [61] Thirlwall, A.P. (2011). Balance of payments constrained growth models: History and overview. *PSL Quarterly Review* 64(259), 307-351.